

2008 Retail Trade Analysis Report



Cambridge & Isanti County, Minnesota

Funding provided by

The Blandin Foundation

and

University of Minnesota Extension's Center for Community Vitality

Copyright © 2010, Regents of the University of Minnesota. All rights reserved.



In accordance with the Americans with Disabilities Act, this material is available in alternative formats upon request. Please contact your University of Minnesota Extension office or the Distribution Center at (800) 876-8636.

The University of Minnesota Extension is committed to the policy that all persons shall have equal access to its programs, facilities, and employment without regard to race, color, creed, religion, national origin, sex, age, marital status, disability, public assistance status, veteran status, or sexual orientation.

Introduction

The University of Minnesota Extension has developed this retail trade analysis program to assist in the economic development of Minnesota towns and cities. These reports are available for all Minnesota counties, for most cities above 5,000 population and for a few cities smaller than 5,000 population. The retail sector of each jurisdiction can be evaluated by comparing its trends to those of other similar jurisdictions. Business people and economic development officials can use measures such as pull factors and leakages to determine the need and feasibility of new retail businesses.

Data Sources

Most of the data in the analysis are based on annual reports of Minnesota retail and use tax, published by the Minnesota Department of Revenue. The Department of Revenue published an annual report of sales and use tax by jurisdiction until 1996, at which time the reports were released biannually due to budget constraints. This analysis uses the available reports from 1990-1996, 1998, 2000, and 2003 through 2008. The reports interpolate data for the years in which data are not available. (See http://www.taxes.state.mn.us/taxes/legal_policy/research_reports/sales_use_statistics_main.shtml) The income data in this report are obtained from reports by Bureau of Economic Analysis (BEA). (See <http://www.bea.gov/regional/reis>) Population data are derived from the U.S. Census. (See <http://www.census.gov/popest/estimates.php>)

Sales and use tax permit holders file returns and remit taxes on either a monthly, quarterly or annual basis. Large businesses such as discount department stores whose tax is more than \$500 per month are required to file on a monthly basis, while medium sized businesses whose sales tax collections are less than \$500 per month, are required to file on a quarterly basis and small businesses with sales tax collections less than \$100 per month would most likely file on an annual basis.

Definition of Terms

Gross Sales

Gross sales include taxable sales and exempt sales for businesses holding sales and use tax permits. This is the most inclusive indicator of business activity for the reporting jurisdictions but it can be misleading when used in comparisons. At times commodity items (like gasoline), that are not taxable, can have large price variations, creating huge swings in gross sales.

Taxable Sales

Taxable sales are the amount of sales subject to sales tax. Taxable sales exclude exempt items, items sold for resale, items sold for exempt purposes and items sold to exempt organizations. For more information on what is taxed in Minnesota, see "Minnesota Sales and Use Tax Instruction Booklet" available on the web at http://www.taxes.state.mn.us/taxes/sales/instructions/st_bk07.pdf

Current and Constant Dollar Sales

Current dollar (or "nominal dollar") sales are sales as reported by the state. No adjustment has been made for price inflation. In general this measure of sales is not satisfactory for comparisons over long periods of time since it does not account for changes in population, inflation, or the state's economy. Constant dollar (or "real dollar") sales reflect changes in price inflation by adjusting current dollar sales with the Consumer Price Index (CPI). Constant dollar sales indicate the real sales level with respect to a base year. This is a more realistic method of evaluating sales over time than current dollar comparisons, but still does not take into consideration changes in population or changes in the state's economy.

Number of businesses

The number of sales and use tax permit holders who filed one or more tax returns for the year are reported as the number of businesses.

Reporting Period

The reporting periods in this report are calendar years. For example, the sales reported for the year 2000 are for the period, January 1, 2000 to December 31, 2000.

Per Capita Sales

Per capita (or “per person”) sales are calculated by dividing current dollar sales by the population estimate. In areas where population is subject to substantial change, this is a more satisfactory measure of sales activity than sales alone. However, it still does not reflect changes in the state economy.

Pull Factor

The pull factor was developed by Dr. Ken Stone, an economist from Iowa State University Extension Service to provide a precise measure of sales activity in a locality. It is derived by dividing the per capita current dollar sales of a city or county by the per capita sales for the state. For example, if a city's per capita sales are \$20,000 per year and the state per capita sales are \$10,000 per year, the pull factor is 2.0 ($\$20,000 \div \$10,000$). The interpretation is that the city is selling to 200 percent of the city population.

Pull factors are good measures of sales activity because they reflect changes in population, inflation, and the state economy. Pull factors are available through the Extension Service for total taxable sales for all cities with reported sales (generally, cities with a population of 5,000 or more) since 1990. The pull factors listed in this report are not adjusted for differing income levels in different communities; they are simply the ratio of local per person sales to the state average. Income levels are accounted for in the expected sales and potential sales formulas, described below.

Typical Pull Factor

The typical pull factor is a pull factor that represents the “norm” for cities within a population group. It is an average for cities within a population group taking into account any outliers in the group.

Personal Income

Personal income is defined as the income received by, or on behalf of, all the residents of the county (state) from all sources. Personal income is the sum of wage and salary disbursements, supplements to wages and salaries (e.g., contributions to retirement funds, health plans, life insurance policies), proprietors' income, rental income, personal dividend income, personal interest income, and personal current transfer receipts to persons (e.g. receipts of Social Security, disability, worker's compensation, Medicare/Medicaid, food stamps, etc.) less contributions for government social insurance (e.g. Social Security, Medicare). (For more details, see http://www.bea.gov/regional/pdf/spi2005/alternative_measures.pdf).

Index of Income

This index provides a relative measure of income, calculated by dividing local per capita income by state per capita income. The base is 1.00. For example, an index of income of 1.20 indicates that per capita income in the area is 20 percent above the state average.

Expected Sales

Expected sales is a retail performance benchmark. It is an estimate of the sales level a town would achieve if it were performing on par with Minnesota towns of a similar size. In addition to population and income variables, expected sales incorporates the typical strength of comparable communities via the *typical pull factor*. Expected sales is the product of city population, state per capita sales, the index of income and the typical pull factor. For example, if a city has a population of 5,000, the state per capita sales are \$9,000, the typical pull factor is 1.30, and the index of income is 1.03, expected sales is approximately \$60 million per year ($5,000 \times \$9,000 \times 1.30 \times 1.03$). This provides a means of comparing what is expected for a city of a certain size to what is actually happening.

Potential Sales

Potential sales is an estimate of the amount of money that is spent on retail goods and services by residents of a county. It is the product of county population, state per capita sales and the index of income. The potential sales concept for counties is similar to the expected sales calculations for towns. However, potential sales does not utilize a measure of average pulling power (like the *typical pull factor* that is used in the expected sales equation). Since a county is a relatively large region within which retail business takes place, counties are compared without adjustments for trade area size.

Variance Between Actual and Expected Sales (Surplus or Leakage)

The variance between actual and expected sales is how much retail sales differ from the "norm" (i.e., the amount above or below the standard established by the expected sales formula). When actual sales exceed expected sales, we say the city has a "surplus" of retail sales. When actual sales fall short of expected sales, we say the city has a retail sales "leakage". The set of similarly-sized cities in Minnesota is the "peer group" to which the comparison is being made. Discrepancies between expected and actual sales occur for a variety of reasons.

Proximity to larger population centers, management, marketing, and transportation patterns are just a few factors that can cause the retail sales of a particular town to deviate substantially from expected sales. It is important that decision-makers consider these influences when constructing policies, plans, or projects. The surplus or leakage is expressed in dollars, percentages, and customer equivalents. The use of the analysis will dictate which measure best conveys the information, though all are equivalent. In the case of leakages, the dollar amount is usually the easiest to use since it immediately conveys the potential sales for new businesses.

Trade Area Population Gain or Loss

The trade area population gain or loss translates the percentage amount of surplus or leakage of retail sales into an estimate of the number of customers gained or lost in the trade area. It is calculated by multiplying the percent surplus or leakage by the population estimate for the city or county. For example, if a city with 10,000 residents had a retail sales surplus of 20%, the trade area population gain would be 2,000. Adding this number to the city's population gives an estimate of the population size of the city's trade area.

Cautions

Gross Sales

Gross sales is a comprehensive measure of business activity, but readers should be aware that the numbers in this report are self-reported by holders of sales and use tax reports. Furthermore, the gross sales are not audited by the State of Minnesota. It is believed that the gross sales figures are generally reliable, but there is the possibility of distortions, especially in smaller cities where misreporting may have occurred.

Misclassification

Holders of sales and use tax permits select the North American Industry Classification System (NAICS) category that best fits their business. Regardless of who makes this classification, errors are occasionally made. Also, sometimes a business will start out as one type of business, but may evolve over time to a considerably different type of business. Misclassifications can distort sales among business categories, especially in smaller towns. For example, a furniture store that is classified as a general merchandise store, will under-report the sales in the furniture store category and over-report the sales in the general merchandise category.

Suppressed Data

The sales data for merchandise categories that have less than four reporting firms are not reported. This is a measure taken by most states to protect the confidentiality of sales tax permit holders. The sales for suppressed categories are placed into the miscellaneous category and are included in total sales.

Consolidated Reporting

Vendors doing business at more than one location in Minnesota have the option of filing a separate return for each location or filing one consolidated return for all locations. The consolidated return shows, for each business establishment, the sales made, tax due and location by city and county. Data for the establishments of consolidated filers are combined with data for single-location filers to produce the figures in this report. Occasionally consolidated reports may not be properly deconstructed and all the sales for a company may be reported for one town or city. Whenever misreporting is discovered, contacts are made with the Minnesota Revenue Department to clarify the situation.

Changes Between 2000 and 2003

For fiscal year 2003, the Minnesota Department of Revenue implemented two major changes to improve their reporting of sales and use tax data. First, they adopted a geo-coding system, which accurately identifies the location of all business reporting sales and use tax to the state rather than relying on the businesses' postal addresses. One effect of this change is a movement of sales between neighboring cities (and in some cases, counties) in the year 2003. Thus, in several of the suburbs of Minneapolis and St. Paul and in cities such as Hermantown, which is adjacent to Duluth, the data show large increases in retail sales between 2000 and 2003, a substantial portion of which is due to the re-coding of business location and not to actual growth in sales.

The second change implemented by the Department of Revenue in 2003 was a shift from the Standard Industrial Classification system (SIC codes) to the North American Industry Classification System (NAICS codes). This switch does affect the comparability of the data series prior to 2000 with that of 2003 (and beyond), especially for merchandise categories. Overall retail and services sales are highly comparable over time. In many cases, the merchandise categories for the data prior to 2003 are very closely related to the new categories. For example, approximately 97% of the 2003 statewide sales in the general merchandise category were accounted for by firms also classified as general merchandise under the SIC system. In other cases, the correspondence is less straightforward. For example, only 56% of 2003 statewide sales in the Food and Beverage store category were accounted for by firms classified as Food Stores under the older classification system; 41% of 2003 Food store sales were accounted for by firms previously categorized as Miscellaneous Retail.

The NAICS system does provide greater detail and introduces some new sectors, such as Retail Electronics. Over time, these changes will improve the information available for retail trade analysis. For additional information, please see www.taxes.state.mn.us/taxes/legal_policy/other_supporting_content/salesuse_%202003_statistics_introduction.shtml.

Changes Starting in 2006

The Sales and Use Tax Statistics report for 2006 uses a slightly different methodology than in previous years. Rather than basing the report on the year in which sales were made (as was true in earlier reports), the 2006 report is based on when returns were processed. To best approximate the economic activity for calendar year 2008, this report includes all returns processed from February 2008 through January 2009. Returns are included in the report regardless of the date of sale.

Cambridge Retail Trade Overview

Total Taxable and Gross Retail Sales

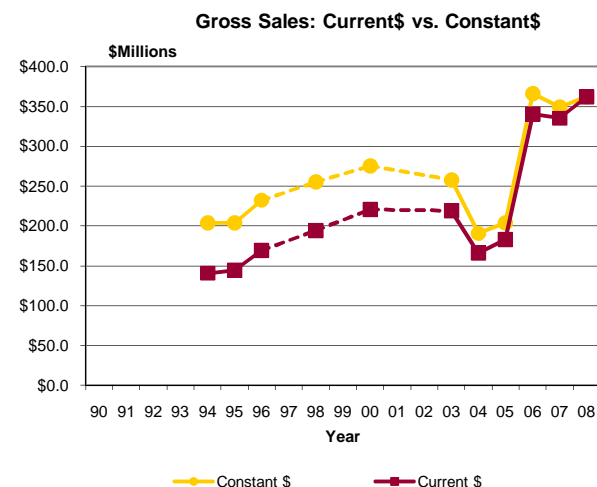
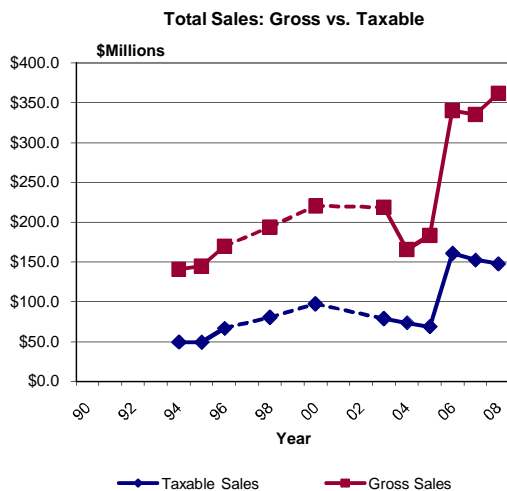
The table below presents gross and taxable retail and services sales for Cambridge from 1990 through 2008. Taxable sales in Cambridge increased 114.8 percent from 2005 to 2008, while the number of firms rose 12.6 percent. Statewide, taxable sales increased 7.1 percent over the same time period and the number of firms rose 3.7 percent. The per capita sales and pull factor data in this table are based on taxable sales, the more verified sales measure.

The table also presents sales data in constant 2008 dollars. These figures have been adjusted for inflation to reflect their value in 2008. For example, in 2000, taxable sales in Cambridge totaled \$97.17 million, an amount worth \$121.46 million in 2008 dollars. In constant dollars, gross sales grew 77.8 percent between 2005 and 2008. Constant dollar taxable sales increased 93.4 percent over the same time period."

Year	Estimated Population	Current Dollars		Constant 2008 Dollars		Number of Firms	Per Capita Sales	Pull Factor
		Gross Sales* (\$millions)	Taxable Sales (\$millions)	Gross Sales* (\$millions)	Taxable Sales (\$millions)			
1990	5,329	NA	NA	NA	NA	NA	NA	NA
1991	5,291	NA	NA	NA	NA	NA	NA	NA
1992	5,303	NA	NA	NA	NA	NA	NA	NA
1993	5,395	NA	NA	NA	NA	NA	NA	NA
1994	5,383	\$140.90	\$49.32	\$204.20	\$71.48	268	\$9,163	1.67
1995	5,468	\$144.72	\$49.14	\$203.83	\$69.21	263	\$8,987	1.58
1996	5,555	\$169.67	\$66.82	\$232.42	\$91.53	261	\$12,028	1.80
1997	5,600	NA	NA	NA	NA	NA	\$0	NA
1998	5,628	\$194.08	\$80.78	\$255.37	\$106.28	285	\$14,353	2.06
1999	5,849	NA	NA	NA	NA	NA	\$0	NA
2000	5,520	\$220.62	\$97.17	\$275.77	\$121.46	270	\$17,603	2.31
2001	5,815	NA	NA	NA	NA	NA	\$0	NA
2002	5,892	NA	NA	NA	NA	NA	\$0	NA
2003	6,382	\$218.91	\$79.09	\$257.54	\$93.05	169	\$12,393	1.39
2004	6,762	\$165.92	\$73.72	\$190.71	\$84.73	187	\$10,902	1.18
2005	7,183	\$183.29	\$68.79	\$203.66	\$76.44	182	\$9,577	1.01
2006	7,377	\$340.61	\$161.31	\$366.25	\$173.46	211	\$21,867	2.28
2007	7,613	\$335.31	\$152.56	\$349.28	\$158.92	177	\$20,039	2.06
2008	7,692	\$362.17	\$147.80	\$362.17	\$147.80	205	\$19,215	2.01
10 yr Change '98 to '08	36.7%	86.6%	83.0%	41.8%	39.1%	-28.1%	33.9%	-2.4%
3 yr Change '05 to '08	7.1%	97.6%	114.8%	77.8%	93.4%	12.6%	100.6%	99.9%

*Gross sales figures are self-reported by firms and not audited by the Dept. of Revenue for accuracy.

Cambridge: Total Retail Sales

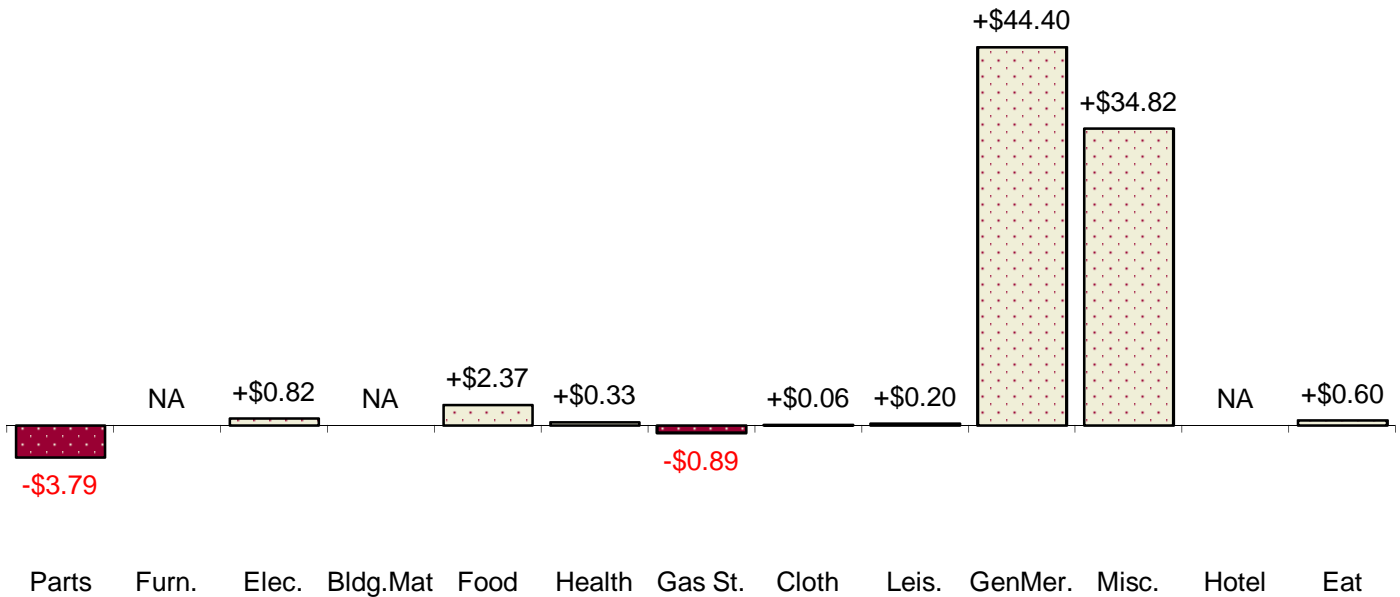


Cambridge Components of Change, 2005 to 2008

Category	Taxable Sales 2005	Taxable Sales 2008	Dollar Change	Percent Change
Vehicles & Parts	\$10,988,656	\$7,200,660	-\$3,787,996	-34.47%
Furniture Stores	NA	NA	NA	NA
Electronics	\$543,619	\$1,361,338	+\$817,719	+150.42%
Building Materials	NA	NA	NA	NA
Food, Groceries	\$3,825,006	\$6,197,445	+\$2,372,439	+62.02%
Health, Personal Stores	\$1,677,249	\$2,003,260	+\$326,011	+19.44%
Gasoline Stations	\$3,495,472	\$2,607,510	-\$887,962	-25.40%
Apparel	\$340,052	\$399,063	+\$59,011	+17.35%
Leisure Goods	\$587,948	\$792,712	+\$204,764	+34.83%
General Merchandise Stores	\$18,013,439	\$62,410,497	+\$44,397,058	+246.47%
Miscellaneous Retail	\$4,874,879	\$39,697,288	+\$34,822,409	+714.32%
Accommodations	NA	NA	NA	NA
Eating & Drinking	+\$10,882,000	+\$11,485,877	+\$603,877	+5.55%
Total Retail and Services Sales	\$68,793,189	\$147,800,733	+\$79,007,544	+114.85%

Figures not adjusted for inflation.

Dollar Changes by Category (in Millions) 2005 to 2008

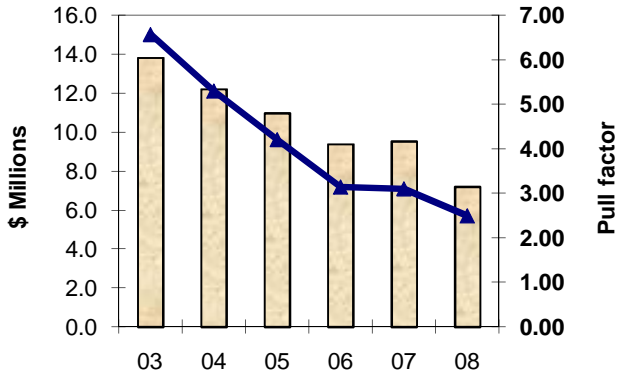


Recent Trends By Merchandise Category

Cambridge



Vehicles & Parts

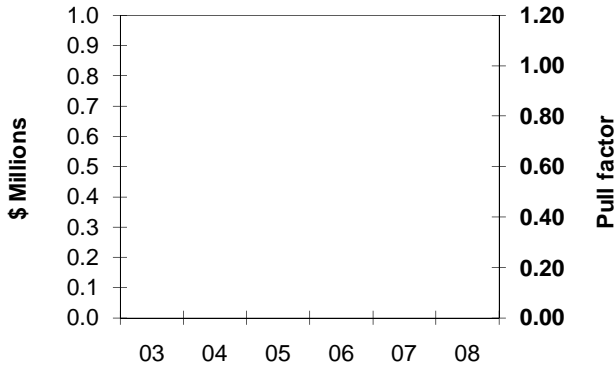


This page looks at several merchandise categories to chart the five-year trend in taxable sales and pull factor.

4.9% of Cambridge's taxable sales in 2008
Sales per capita are \$936

Stores in the Motor Vehicle and Parts Dealers subsector retail motor vehicles and parts from fixed point-of-sale locations. This can include automobiles, campers, RV's, boats, out-board motors, sailboats, snowmobiles, motorcycles, and all terrain vehicles.

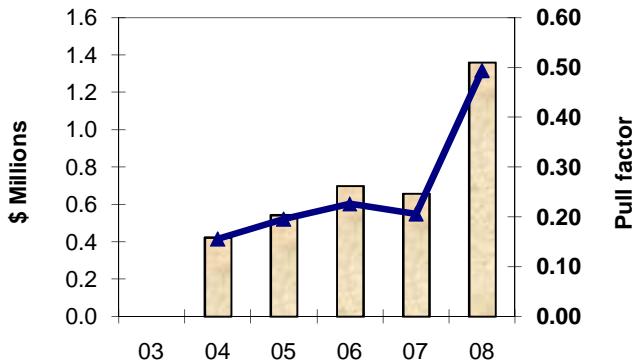
Furniture



NA of Cambridge's taxable sales in 2008

Stores in the Furniture and Home Furnishings subsector retail new furniture and home furnishings from fixed point-of-sale locations. This can include bed stores, office furniture, carpet stores, window treatments, lamps, framing shops, linens, and kitchenware.

Electronics



0.9% of Cambridge's taxable sales in 2008
Sales per capita are \$177

Stores in the Electronics and Appliance subsector retail new electronics and appliances from point-of-sale locations. This can include household appliances, sewing machines, vacuum cleaners, computers, cameras, telephones, cell phones, televisions, and radios.

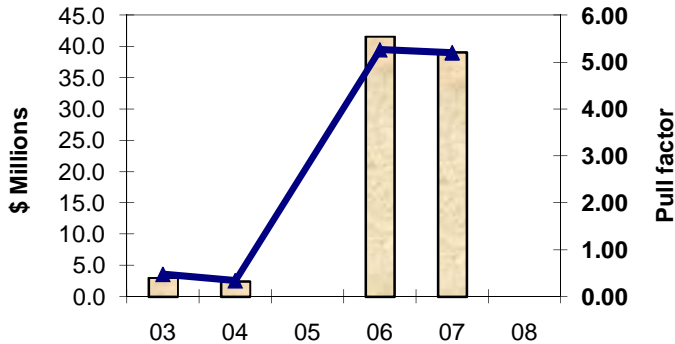
Recent Trends By Merchandise Category

Cambridge

This page looks at several merchandise categories to chart the five-year trend in taxable sales and pull factor.



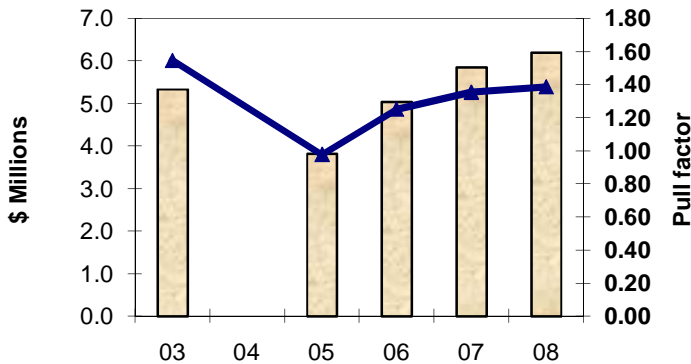
Building Materials



NA of Cambridge's taxable sales in 2008

Stores in the Building Material and Garden Equipment and Supplies Dealers subsector retail new building material and garden equipment and supplies. This includes home improvement centers and stores that sell paint, wallpaper, ceramic tile, fencing, windows, roofing, siding, hardware, and plumbing.

Groceries & Beverage Stores

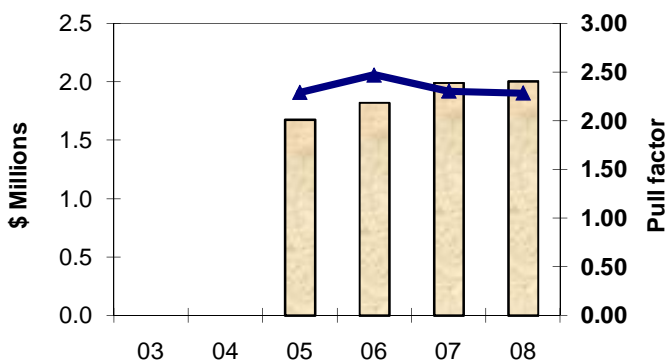


4.2% of Cambridge's taxable sales in 2008

Sales per capita are \$806

Stores in the Food and Beverage Stores subsector usually retail food and beverages merchandise from fixed point-of-sale locations. This can include grocery stores, liquor stores, bakeries, candy shops, butcher stores, meat markets, and produce markets.

Health, Pharmacy, Optical



1.4% of Cambridge's taxable sales in 2008

Sales per capita are \$260

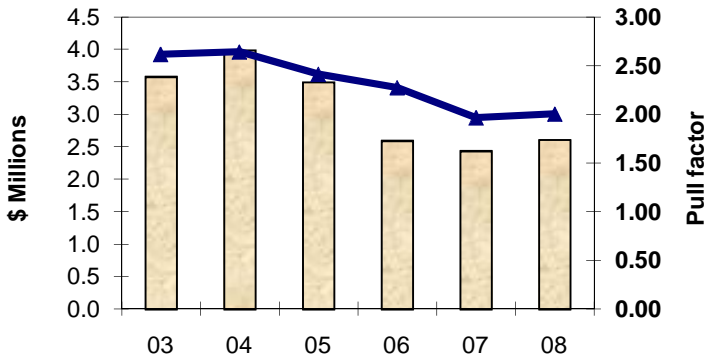
Stores in the Health and Personal Care Stores subsector retail health and personal care merchandise from fixed point-of-sale locations. This includes drug stores, health supplement stores, hearing aid stores, optical goods stores, cosmetic stores, medical supply stores,

Recent Trends By Merchandise Category

Cambridge



Gas/Convenience Stores



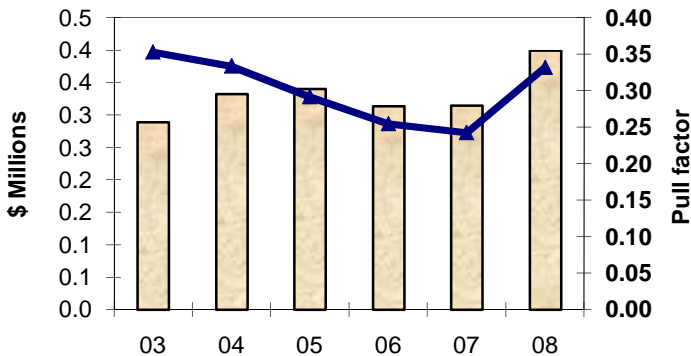
This page looks at several merchandise categories to chart the five-year trend in taxable sales and pull factor.

1.8% of Cambridge's taxable sales in 2008

Sales per capita are \$339

Stores in the Gasoline Stations subsector group establishments retailing automotive fuels (e.g., gasoline, diesel fuel, gasohol) and automotive oils and retailing these products in combination with convenience store items. This can include truck stops, C stores, marine service stations, and ordinary gas stations that sell automotive supplies.

Clothing & Accessories

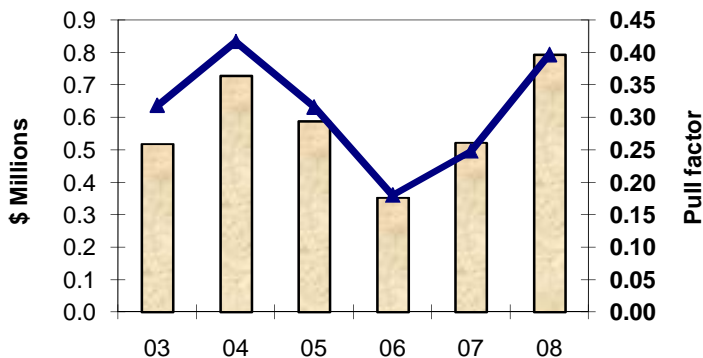


0.3% of Cambridge's taxable sales in 2008

Sales per capita are \$52

Stores in the Clothing and Clothing Accessories Stores subsector retailing new clothing and clothing accessories. Besides clothing stores it includes shops that sell jewelry, shoes, luggage, handbags, wigs, ties, bridal gowns, furs, uniforms, T-shirts, baby clothing, swimsuits, and lingerie.

Sporting Goods/Hobbies



0.5% of Cambridge's taxable sales in 2008

Sales per capita are \$103

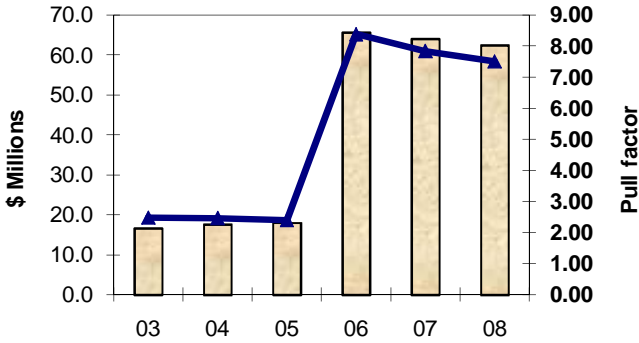
Stores in the Sporting Goods, Hobby, Book, and Music Stores subsector are engaged in retailing and providing expertise on use of sporting equipment or other specific leisure activities, such as needlework and musical instruments. Newstands also fit in this subsector.

Recent Trends By Merchandise Category

Cambridge



General Merchandise Stores

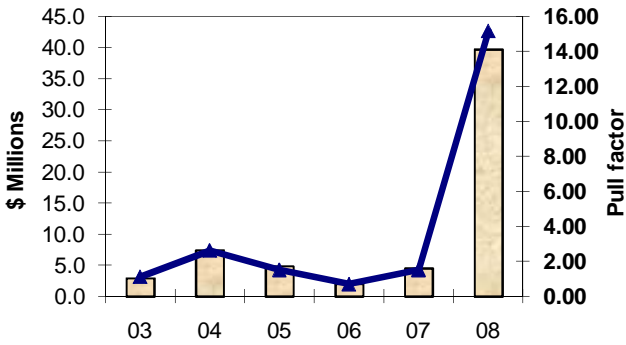


This page looks at several merchandise categories to chart the five-year trend in taxable sales and pull factor.

42.2% of Cambridge's taxable sales in 2008
Sales per capita are \$8114

Stores in the General Merchandise subsector retail new general merchandise and are unique in that they have the equipment and staff capable of retailing a large variety of goods from a single location. This includes department stores, superstores, dollar stores, and variety stores.

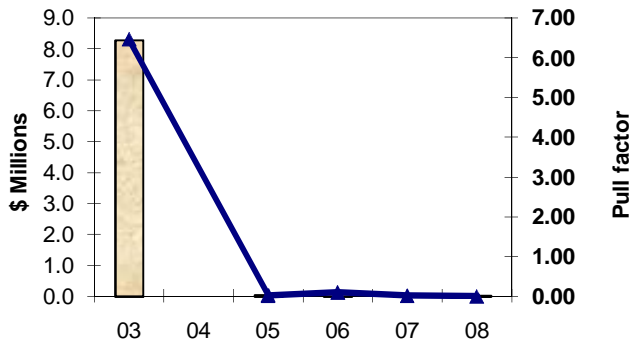
Miscellaneous & Previously Unreported



26.9% of Cambridge's taxable sales in 2008
Sales per capita are \$5161

Establishments such as florists, used merchandise stores, and pet and pet supply stores as well as other store retailers. Also, if a community had fewer than 4 stores in a previous sector, it was included in this category. This may cause unrealistically high Pull Factors.

Non-Store Retail

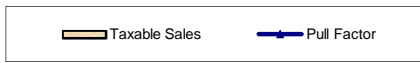


0.0% of Cambridge's taxable sales in 2008
Sales per capita are \$1

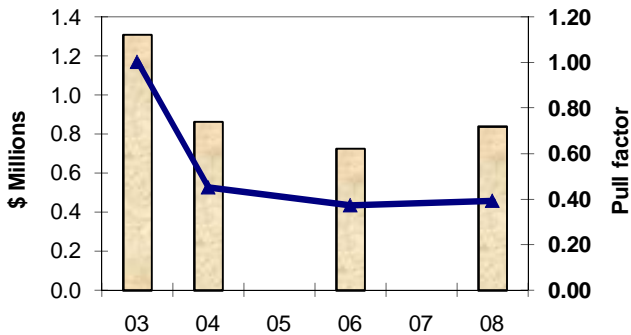
Mail-order houses, vending machine operators, home delivery sales, door-to-door sales, party plan sales, electronic shopping, and sales through portable stands (except food). Establishments engage in direct sale (nonstore) of products, such as home heating oil dealers and newspaper delivery are included in this subsector.

Recent Trends By Merchandise Category

Cambridge



Amusement



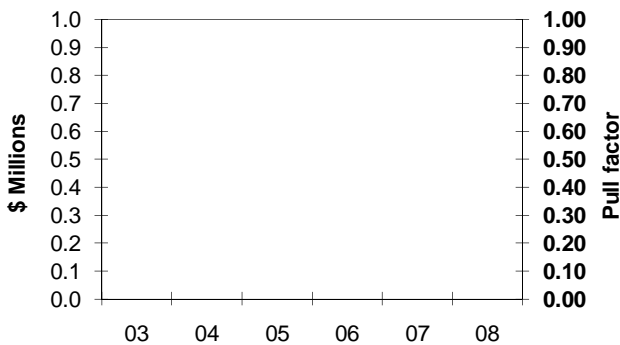
This page looks at several merchandise or service categories to chart the five-year trend in taxable sales and pull factor.

0.6% of Cambridge's taxable sales in 2008

Pull Factor 1.00 is \$278 sales per capita

Establishments include casinos, bowling lanes, water parks, amusement parks, arcades, bingo halls, golf courses, ski slopes, marinas, dance or fitness centers, recreational clubs, ice rinks, swimming pools, roller rinks, and the like.

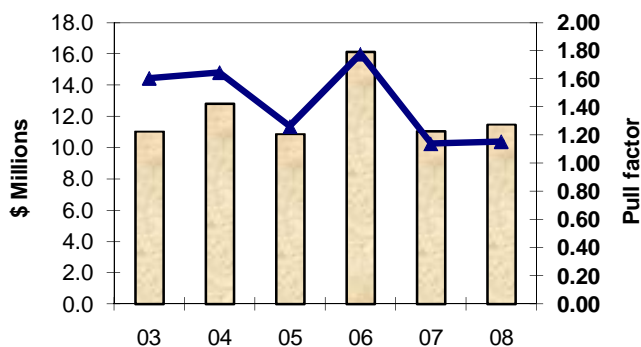
Accommodations



NA of Cambridge's taxable sales in 2008

These businesses provide provide lodging or short-term accommodations for travelers, vacationers, and others. Included are hotels, motels, lodges, bed & breakfasts, campgrounds, fraternities, boarding houses, and dormitories.

Eating & Drinking



7.8% of Cambridge's taxable sales in 2008

Sales per capita are \$1493

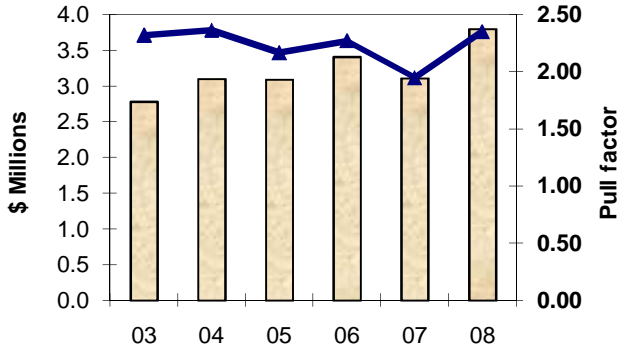
These businesses sell food at full-service or limited-service establishments. It includes cafeterias, bagel shops, ice cream parlors, snack bars, food service contractors, caterers, lunch wagons, and street vendors. It also includes bars, taverns, and nightclubs.

Recent Trends By Merchandise Category

Cambridge



Repair Businesses



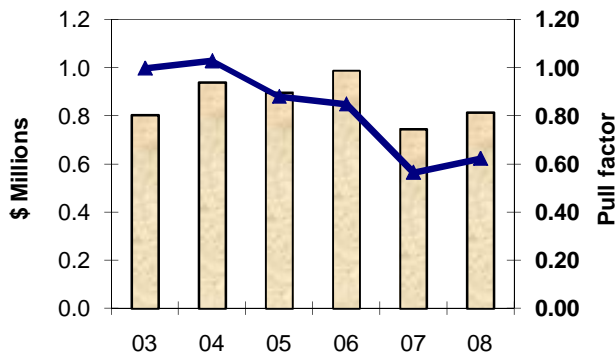
This page looks at several categories to chart the five-year trend in taxable sales and pull factor.

2.6% of Cambridge's taxable sales in 2008

Pull Factor 1.00 is \$210 sales per capita

*The Repair and Maintenance subsector restore machinery, equipment, and other products to working order. It does **not** include plumbers & electricitians. It does include repairs to autos, cameras, radio, television, computers, copiers, appliances, lawn mowers, specialized equipment, small engines, furnitures, shoes, guns, etc.*

Personal Service Providers



0.6% of Cambridge's taxable sales in 2008

Pull Factor 1.00 is \$170 sales per capita

Services performed include: personal care services; barber shops & beauty parlors; death care services; laundry and drycleaning services; and a wide range of other personal services, such as pet care (except veterinary) services, photofinishing services, temporary parking services, and dating services.

Historical Trends By Merchandise Category Cambridge

The following tables and charts depict pull factors in Cambridge from 1990 to 2000* by merchandise category. Pull factors are a measure of trade area size that provide a useful measure of changes over time because they account for changes in population and state-wide industry trends.

Category Descriptions

Building Materials: Includes retail establishments primarily engaged in selling lumber and other building materials; paint, glass, and wallpaper; hardware; nursery stock; and lawn and garden supplies.

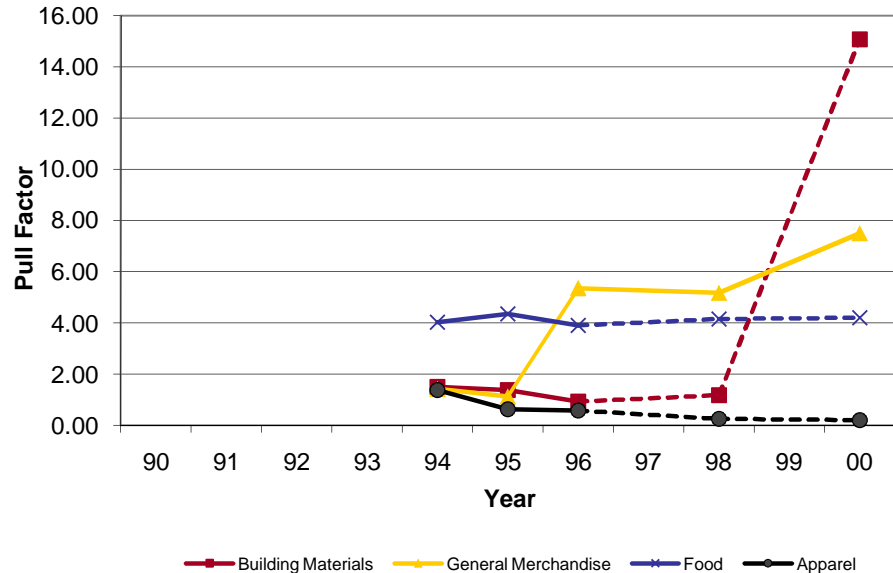
General Merchandise: Includes retail stores which sell a number of lines of merchandise, such as dry goods, apparel and accessories, furniture and home furnishings, small wares, hardware, and food. The stores included in this group are known as department stores, variety stores, general merchandise stores, catalog showrooms, warehouse clubs, and general stores.

Food: This group is comprised of retail stores primarily engaged in selling food for home preparation and consumption.

Apparel: Retail stores primarily engaged in selling clothing of all kinds and related articles for personal wear and adornment. Not included are establishments which meet the criteria for Department Stores even though most of their receipts are from the sale of apparel and apparel accessories.

*Due to a change in how firms are categorized beginning with fiscal year 2003, only data through fiscal year 2000 are presented in this section.

Pull Factors by Merchandise Category (1 of 3)



**Pull Factors by Merchandise Category
Cambridge, 1990-2000**

Year	Building Materials	General Merchandise	Food	Apparel
1990	NA	NA	NA	NA
1991	NA	NA	NA	NA
1992	NA	NA	NA	NA
1993	NA	NA	NA	NA
1994	1.50	1.43	4.02	1.39
1995	1.39	1.14	4.35	0.64
1996	0.94	5.36	3.92	0.58
1997	NA	NA	NA	NA
1998	1.18	5.18	4.15	0.25
1999	NA	NA	NA	NA
2000	15.07	7.50	4.21	0.20
% Change, '90 to '00	NA	NA	NA	NA
% Change, '98 to '00	1179.53%	44.85%	1.33%	-17.35%

These pull factors are calculated using taxable sales. Although taxable sales do not capture the full extent of sales in stores with a large number of un-taxed goods, like grocery and apparel stores, these data are audited by the Minnesota Department of Revenue. Since sales tax laws apply statewide, all cities are compared on the same basis.

Historical Trends By Merchandise Category Cambridge

The following tables and charts depict pull factors in Cambridge from 1990 to 2000* by merchandise category. Pull factors are a measure of trade area size that provide a useful measure of changes over time because they account for changes in population and state-wide industry trends.

Category Descriptions

Furniture: This group includes retail stores selling goods used for furnishing the home such as furniture, floor coverings, draperies, glass and chinaware, domestic stoves, refrigerators, and other household electric and gas appliances.

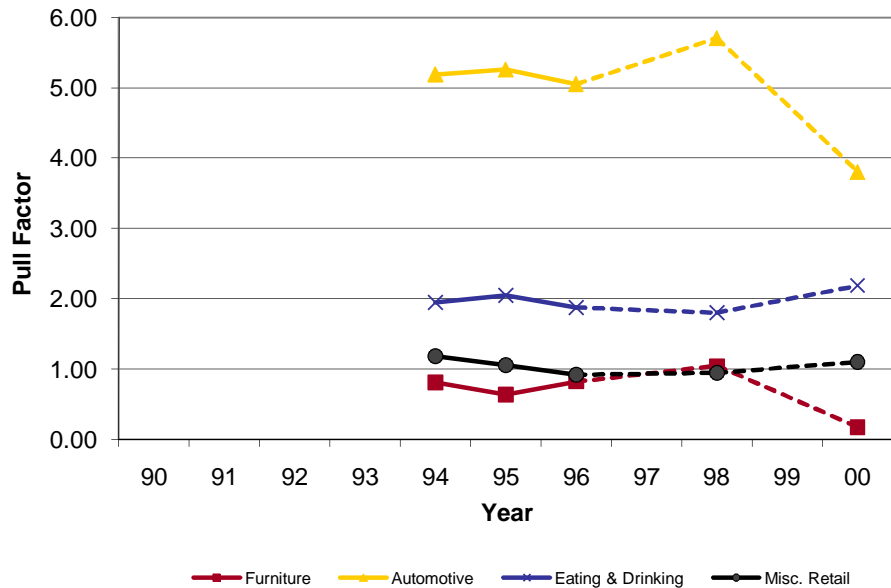
Automotive: Establishments selling new and used automobiles, boats, recreational vehicles and utility trailers, and motorcycles and mopeds; dealers selling new automobile parts and accessories; and gasoline service stations.

Eating & Drinking: This major group includes retail establishments engaged in selling prepared food and drinks for consumption on the premises. Also included are caterers which serve prepared food other than at the place of business and lunch counters and refreshment stands selling prepared foods and drinks for immediate consumption.

Miscellaneous Retail: This category includes retail establishments not elsewhere classified. These establishments fall into the following categories: liquor stores; used merchandise stores; miscellaneous shopping goods stores; nonstore retailers, fuel dealers, florists, cigar stores and stands, news dealers and newsstands, and miscellaneous retail stores not elsewhere classified.

*Due to a change in how firms are categorized beginning with fiscal year 2003, only data through fiscal year 2000 are presented in this section.

Pull Factors by Merchandise Category (2 of 3)



Pull Factors by Merchandise Category Cambridge, 1990-2000

Year	Furniture	Automotive	Eating & Drinking	Misc. Retail
1990	NA	NA	NA	NA
1991	NA	NA	NA	NA
1992	NA	NA	NA	NA
1993	NA	NA	NA	NA
1994	0.82	5.19	1.95	1.19
1995	0.64	5.26	2.05	1.06
1996	0.83	5.05	1.88	0.92
1997	NA	NA	NA	NA
1998	1.05	5.70	1.81	0.95
1999	NA	NA	NA	NA
2000	0.18	3.80	2.19	1.11
% Change, '90 to '00	NA	NA	NA	NA
% Change, '98 to '00	-83.11%	-33.33%	21.14%	16.66%

These pull factors are calculated using taxable sales. Although taxable sales do not capture the full extent of sales in stores with a large number of un-taxed goods, like grocery and apparel stores, these data are audited by the Minnesota Department of Revenue. Since sales tax laws apply statewide, all cities are compared on the same basis.

Historical Trends By Merchandise Category Cambridge

The following tables and charts depict pull factors in Cambridge from 1990 to 2000* by merchandise category. Pull factors are a measure of trade area size that provide a useful measure of changes over time because they account for changes in population and state-wide industry trends.

Category Descriptions

Lodging: Includes establishments engaged in providing lodging, or lodging and meals, and camping facilities.

Personal Services: includes establishments primarily engaged in providing services generally to individuals, such as barber and beauty shops, drycleaning plants, laundries, and photographic studios.

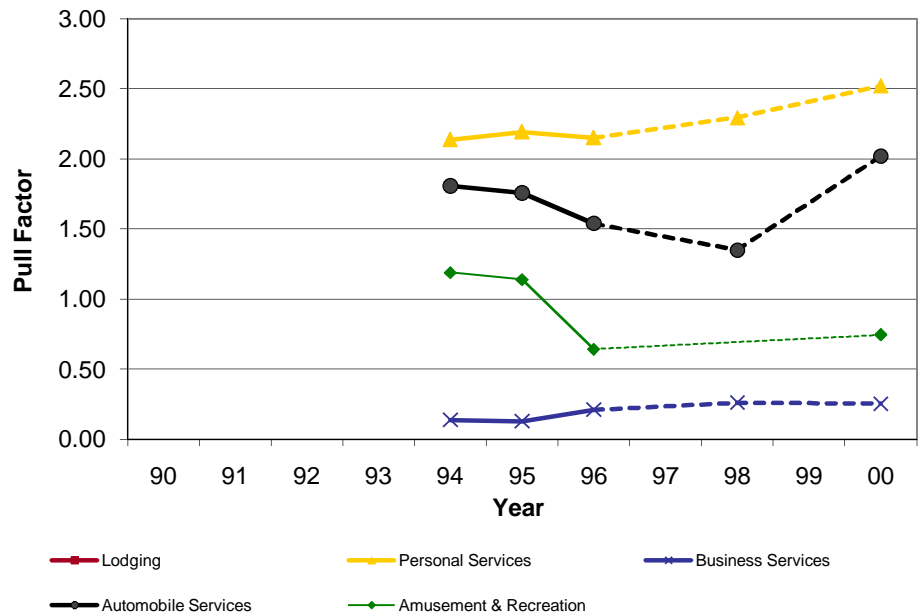
Business Services: Includes establishments primarily engaged in providing services, not elsewhere classified, to business establishments on a contract or fee basis.

Automobile Services: Includes establishments primarily engaged in furnishing automotive repair, rental, leasing, parking, and other services.

Amusement and Recreation: This group includes establishments primarily engaged in providing amusement, recreation, or entertainment services, not elsewhere classified.

*Due to a change in how firms are categorized beginning with fiscal year 2003, only data through fiscal year 2000 are presented in this section.

Pull Factors by Merchandise Category (3 of 3)



**Pull Factors by Merchandise Category
Cambridge, 1990-2000**

Year	Lodging	Personal Services	Business Services	Automobile Services	Amusement & Recreation
1990	NA	NA	NA	NA	NA
1991	NA	NA	NA	NA	NA
1992	NA	NA	NA	NA	NA
1993	NA	NA	NA	NA	NA
1994	NA	2.14	0.14	1.81	1.19
1995	NA	2.19	0.13	1.76	1.14
1996	NA	2.15	0.21	1.54	0.64
1997	NA	NA	NA	NA	NA
1998	NA	2.29	0.26	1.35	NA
1999	NA	NA	NA	NA	NA
2000	NA	2.52	0.25	2.02	0.75
% Change, '90 to '00	NA	NA	NA	NA	NA
% Change, '98 to '00	NA	9.92%	-3.10%	49.51%	NA

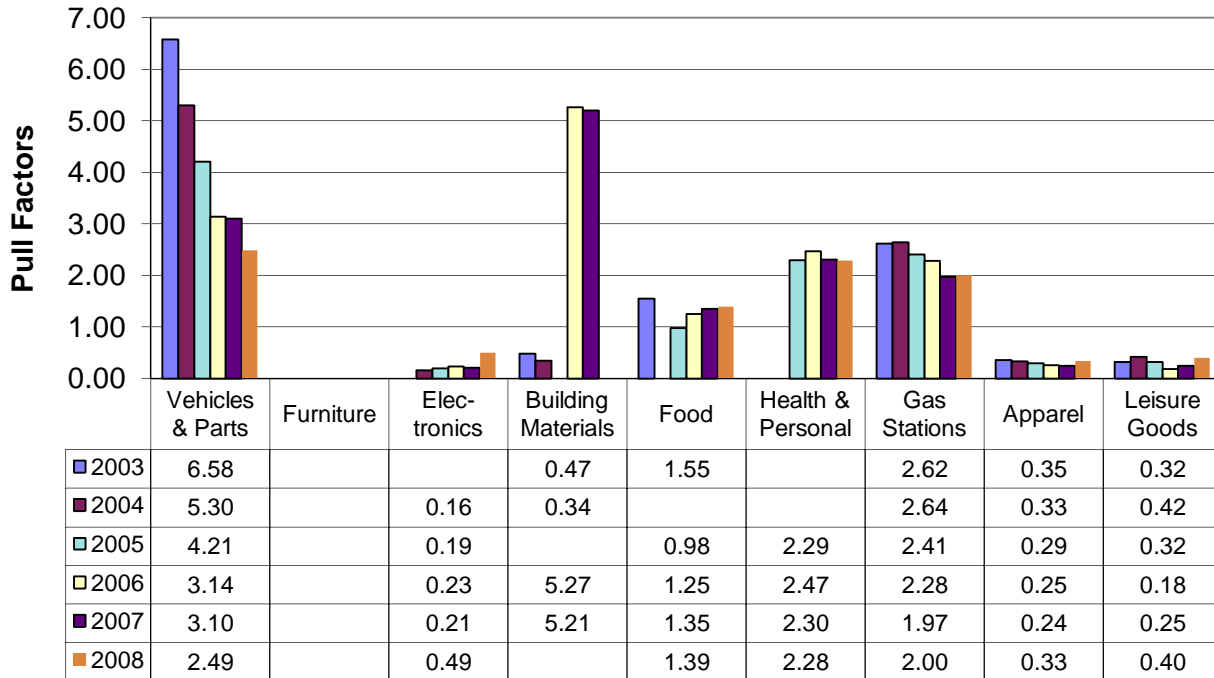
These pull factors are calculated using taxable sales. Although taxable sales do not capture the full extent of sales in stores with a large number of un-taxed goods, like grocery and apparel stores, these data are audited by the Minnesota Department of Revenue. Since sales tax laws apply statewide, all cities are compared on the same basis.

Recent Trends By Merchandise Category

Cambridge

The following tables and charts depict pull factors in Cambridge from 2003 to 2008* by merchandise category. Pull factors are a measure of trade area size that provide a useful measure of changes over time because they account for changes in population and state-wide industry trends.

Pull Factor by NAICS Merchandise Category (1 of 2)



NAICS Category Descriptions

Motor Vehicles & Parts: Establishments that sell new & used autos, boats, motorcycles, golf carts, RV's, campers, trailers, tires, and parts.

Furniture: Stores that sell furniture, beds, carpeting, window coverings, lamps, china, kitchenware, & woodburning stoves.

Electronics: Establishments primarily engaged in retailing household-type appliances, sewing machines, cameras, computers, and other electronic goods.

Building Materials: Establishments that sell lumber, hardware, paint, wallpaper, tile, hardwood floors, roofing, fencing, ceiling fans, lawn equipment, garden centers, and feed stores.

Food: Grocery stores, deli's, bakery, & butcher shops that sell food to be prepared at home. Liquor stores.

Health & Personal: Pharmacies, food supplements, vision supplies, cosmetics, & hearing aid stores.

Gas Stations: Retailers that sell fuel along with convenience store items.

Apparel: New clothing and accessories, jewelry, shoes, bridal shops, clock shops, and luggage stores.

Leisure Goods: Sporting goods, books, music, hobby stores, fabric shops, and toy stores.

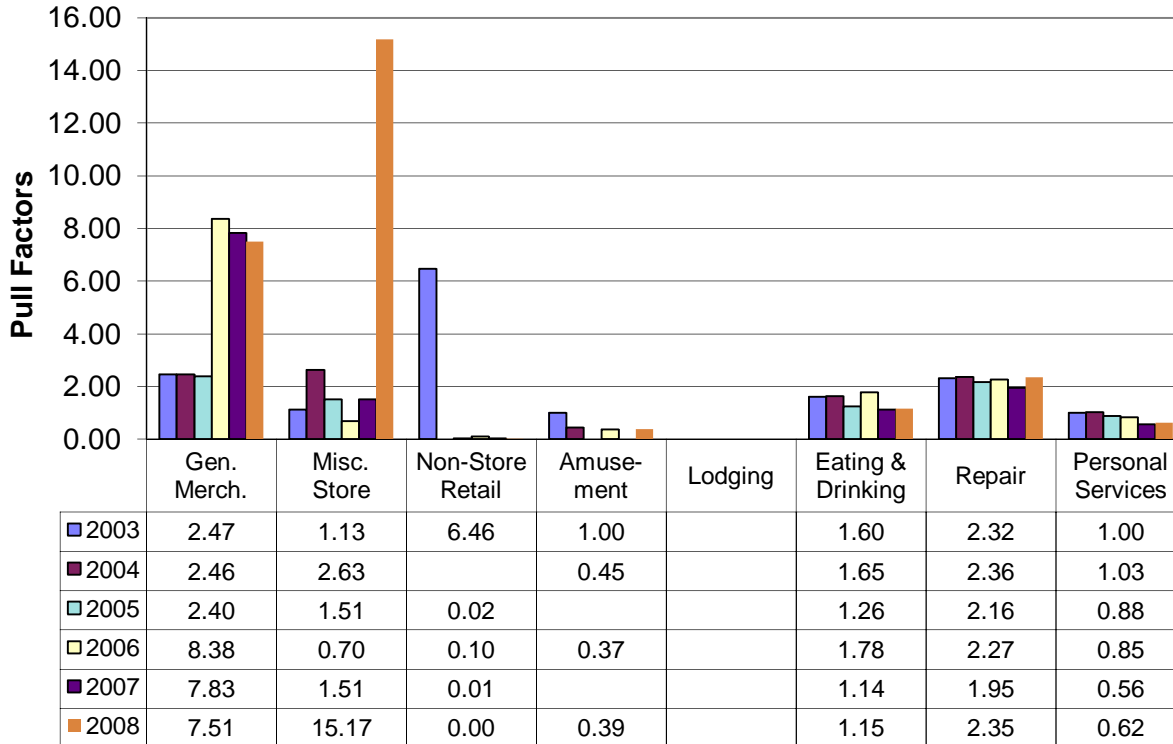
*Caution should be used when comparing pull factors before 2003 to those in later years due to the switch from SIC to NAICS.

Recent Trends By Merchandise Category

Cambridge

The following tables and charts depict pull factors in Cambridge from 2003 to 2008* by merchandise category. Pull factors are a measure of trade area size that provide a useful measure of changes over time because they account for changes in population and state-wide industry trends.

**Pull Factor by NAICS
Merchandise Category (2 of 2)**



NAICS Category Descriptions

General Merchandise: Establishments that sell a mixed line of goods. Examples are department stores, supercenters, and dollar stores.

Miscellaneous Store Retailers: Stores not covered in other categories such as florists, office supplies, pets, antiques, tobacco, art, used merchandise, and trophies.

Non-Store Retail: Retailers that do not use stores. This includes mail order, internet selling, bazaars, vending machines, fuel oil dealers, firewood dealers, door-to-door sales, and produce stands.

Amusement: Establishments such as golf courses, bowling lanes, marinas, amusement parks, water parks, shooting ranges, pool halls, horseback riding, ballrooms, health club facilities, ski hills, and casinos.

Lodging: Seasonal resorts, hotels, boarding houses, bed & breakfast, campgrounds, RV parks.

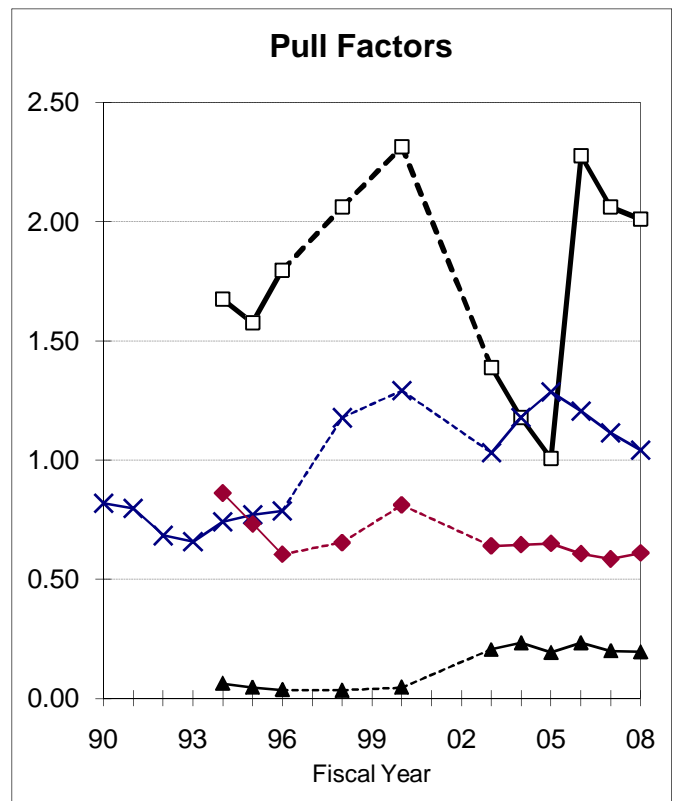
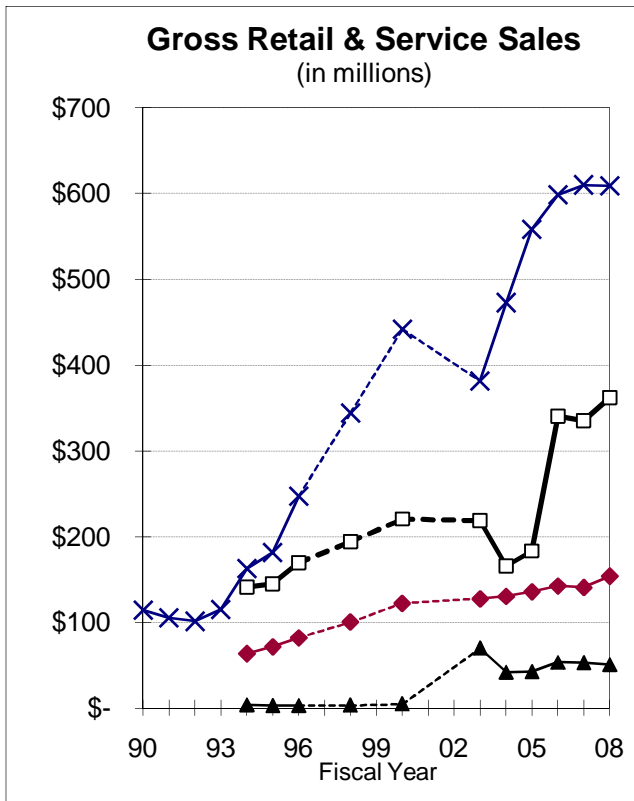
Eating & Drinking: Restaurants, donut shops, coffee house, cafeteria, caterers, taverns, and nightclubs,

Repair: Businesses that return equipment to working order. Examples: cars, lawnmowers, small engines, knives, shoes, computers, furniture, and appliances.

Personal Services: Barbers, beauty salons, tanning facilities, funeral homes, laundromats, dry cleaners, pet groomers, kennels, and photo finishing.

*Caution should be used when comparing pull factors before 2003 to those in later years due to the switch from SIC to NAICS.

Comparison with Competing Centers Cambridge



Cambridge
 East Bethel
 Elk River
 North Branch

Information about competing trade centers can provide a useful means of comparison when assessing a community's retail trade sector. Comparison towns were selected based on geographic proximity, relative size and availability of data. Some caution is warranted in the interpretation of these comparisons however, since retail sales data is provided for only a limited number of towns and cities.

Comparison with Competing Trade Centers, 2008

Town	Population	Gross Sales (\$millions)	Taxable Sales (\$millions)	Number of Firms	Per Capita Taxable Sales	Pull Factor (Taxable Sales)
Cambridge	7,692	\$362.17	\$147.80	205	\$19,215	2.01
East Bethel	11,895	\$50.94	\$22.20	174	\$1,866	0.20
Elk River	23,194	\$609.08	\$231.09	546	\$9,964	1.04
North Branch	10,417	\$154.17	\$60.80	202	\$5,836	0.61

Trade Area Analysis of Retail Sales

Cambridge

The following tables provide information on retail sales by merchandise category. "Expected sales" is a standard to which actual performance is compared. In calculating expected sales, population, income, and typical "pulling power" characteristics are taken into account. Expected sales can be used as a guideline or "par value" in analyzing retail strength.

Deviations from these norms can be analyzed to first judge whether they should be considered relevant. If the differences appear to be significant (whether in dollar amounts or relatively with percentages), additional consideration is merited. Categories with undesirable performance may be further examined for potential corrective action. It is also important to determine whether or not the situation is relatively uncontrollable due to external or extenuating circumstances. In cases of favorable differences from expectations, the positive aspects should be identified and built upon.

Trade Area Analysis by Merchandise Category, 2008

Merchandise Group	<u>Variance Between Actual & Expected</u>				Trade Area Pop. Gain or Loss	Number of Firms	Percent of Total Sales
	Expected Sales (\$millions)	Actual Sales (\$millions)	In Dollars (millions)	As % of Expected			
Vehicles & Parts	\$4.96	\$7.20	+\$2.24	+45.1%	3,467	5	4.9%
Furniture Stores	\$3.60	NA	NA	NA	NA	NA	NA
Electronics	\$4.73	\$1.36	-\$3.37	-71.2%	-5,477	7	0.9%
Building Materials	\$12.10	NA	NA	NA	NA	NA	NA
Food, Groceries	\$7.67	\$6.20	-\$1.47	-19.2%	-1,474	5	4.2%
Health, Personal Stores	\$1.51	\$2.00	+\$0.50	+33.1%	2,545	7	1.4%
Gasoline Stations	\$2.24	\$2.61	+\$0.37	+16.6%	1,281	6	1.8%
Apparel	\$2.07	\$0.40	-\$1.67	-80.7%	-6,207	10	0.3%
Leisure Goods	\$3.43	\$0.79	-\$2.64	-76.9%	-5,916	9	0.5%
General Merchandise Stores	\$14.27	\$62.41	+\$48.14	+337.3%	25,946	6	42.2%
Miscellaneous Retail	\$4.49	\$39.70	+\$35.21	+784.0%	60,303	24	26.9%
Amusement & Recreation	\$1.64	\$0.84	-\$0.80	-48.8%	-3,750	4	0.6%
Accommodations	\$1.96	NA	NA	NA	NA	NA	NA
Eating & Drinking Places	\$7.63	\$11.49	+\$3.86	+50.6%	3,889	17	7.8%
Repair, Maintenance	\$1.24	\$3.80	+\$2.56	+206.4%	15,875	16	2.6%
Personal Services, Laundry	+\$1.00	+\$0.81	-\$0.19	-18.9%	-1,455	24	0.6%
Total Taxable Retail & Service	\$67.27	\$147.80	+\$80.53	+119.7%	9,208	205	100.0%

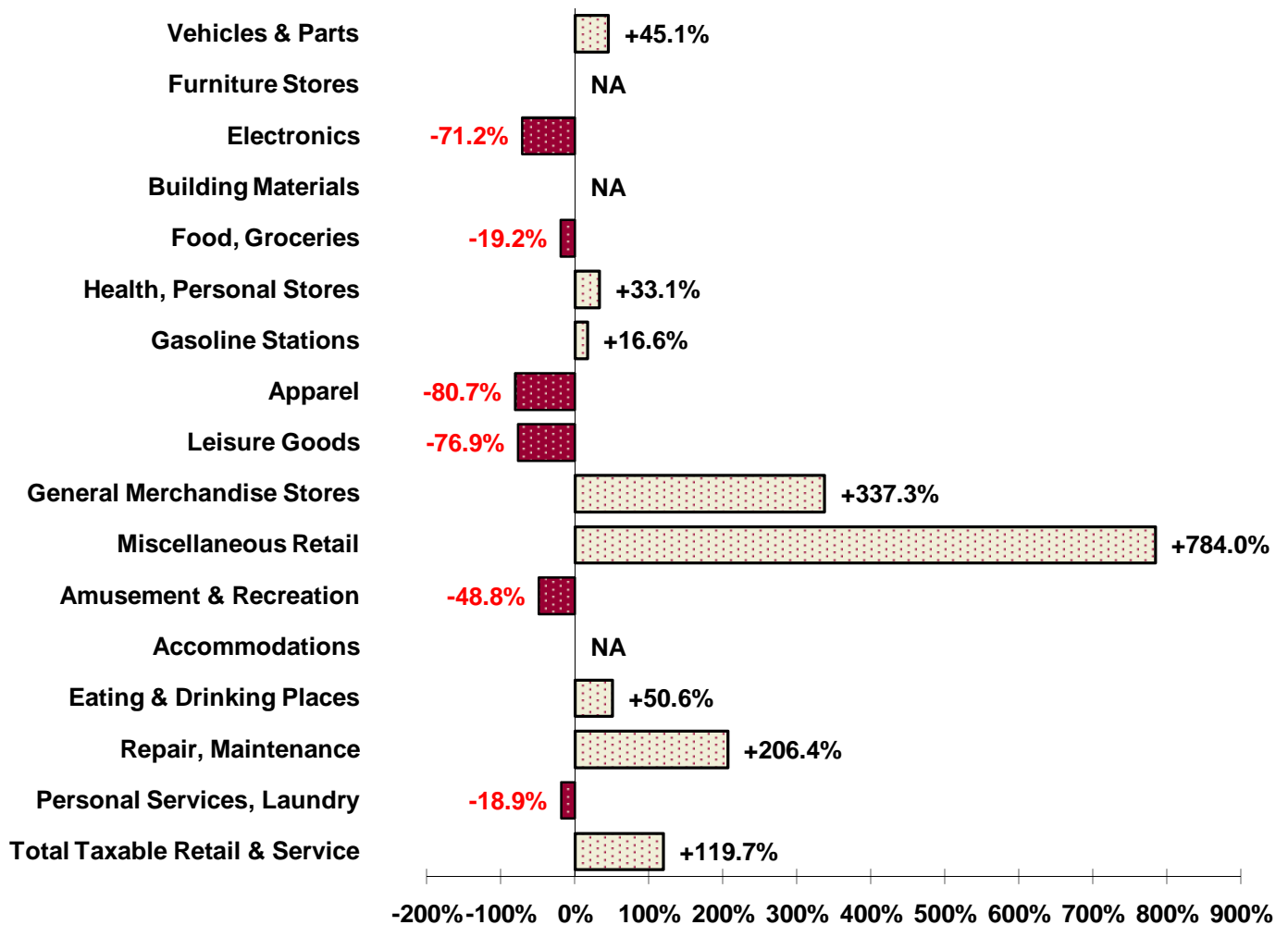
*All retail and service categories are included in Total Sales, including some categories not shown. Therefore, the merchandise groups shown here generally will not sum to Total Sales.

Summary of Cambridge Retail Trade

The chart below depicts the percentage amount Cambridge's actual sales were above or below expected sales in 2008 by merchandise group. Of the 13 merchandise categories with reported data, sales in 7 of the categories were above what would be expected based on the performance in similar-sized Minnesota towns. The strongest merchandise group by this standard is the Miscellaneous Retail category, which has a 784 percent surplus. Overall, Cambridge had a retail sales surplus of 119.7 percent in 2008.

It is important to note that variations in a town's relative retail performance may occur for a variety of reasons, some of which are beyond the control of local policy. Proximity to larger population centers, management, marketing, and transportation patterns are just a few factors that can cause the retail sales of a particular city to deviate substantially from expected sales. It is important that decision-makers consider these influences when constructing policies, plans, or projects.

Percentage Above or Below Expected Sales, 2008



Comparison of Pull Factors by Merchandise Category

2008 Index of "Pulling Power" Towns with Populations between 6,100 & 9,300 (Range: Population of Cambridge +/- ~ 20%.) (19 Cities)

Pull Factors

Town	Population	Vehicles, Parts	Furniture Stores	Elec- tronics	Building Materials	Food	Health, Personal	Gasoline Stations	Apparel	Leisure Goods	General Merch.	Misc.	Amuse- ment	Lodging	Eating & Drinking	Repair, Maint.	Personal Services	Taxable \$ Pull Factor
Town name																		
Grand Rapids	8,743	4.37	1.97	0.18	3.36	2.81	1.31	3.94	1.04	1.10	5.79	1.50	0.45	2.42	1.77	2.03	0.68	2.12
Virginia	8,480	2.53	0.76	0.79	0.86	1.64	1.44	1.79	3.00	1.48	3.73	1.05	0.69	0.75	1.51	0.76	0.66	1.27
Thief River Falls	8,472	2.65	1.13	0.64	1.13	1.53	1.02		0.55	0.51	3.57	1.49	0.20	1.17	1.14	0.86	0.43	1.11
St Anthony	8,341					3.11	2.80	0.79	0.71	0.40		9.93	0.29		1.29	0.64	0.39	0.84
Baxter	8,271	4.79	3.25	6.95	9.81	3.82		1.71	0.59	5.08	13.70	2.39	0.84	3.57	2.65	1.71	0.71	4.19
Oak Grove	8,245											1.64			0.14	1.34	0.15	0.14
Detroit Lakes	8,141	1.69	1.25		6.14	1.90	0.40	1.82	1.37	0.50	5.23	1.01	4.00	2.59	2.29	2.49	0.82	2.27
Little Falls	8,121	1.19	0.71	0.58	0.58	2.22		3.15	0.62	0.18	3.57	1.02	0.33	0.39	1.30	1.07	0.31	1.04
Mahtomedi	8,025					0.67		0.98	0.00	0.07		1.00	0.03		0.66	0.63	0.81	0.23
East Grand Forks	7,812	1.03				0.65		1.06	0.21	5.99		2.50	0.49		1.23	0.39	0.20	0.57
Crookston	7,790	1.10			0.94	2.23	0.39	0.59	0.19	0.07		10.22	0.34		0.78	2.20	0.17	0.84
Orono	7,732	2.27	0.95			0.94				0.03		1.31	4.40		0.47		1.39	0.57
Cambridge	7,692	2.49		0.49		1.39	2.28	2.00	0.33	0.40	7.51	15.17	0.39		1.15	2.35	0.62	2.01
Lake Elmo	7,484		0.15		1.50				0.38	0.48		1.31	1.83		1.10	0.49	1.17	0.48
Shorewood	7,426		0.08	0.07						0.64		4.86	1.92		0.23	0.84	0.95	0.34
Waite Park	6,796	2.76	13.63	1.26	12.37	6.27		1.98	6.92	5.42	7.37	3.21	0.43	1.28	3.87	4.10	1.71	4.42
Litchfield	6,560	1.04			1.20	1.17		0.87			0.49	0.52	0.48		0.92	1.17	0.14	0.52
Spring Lake Park	6,458	1.67		0.28					0.12	0.55		5.09	1.79		1.60	3.64	0.22	0.94
St Joseph	6,114					0.65				0.08		1.76			0.48	1.33	0.15	0.23
Unadjusted Average: *		2.28	2.39	1.25	3.79	2.17	1.38	1.72	1.15	1.43	5.66	3.62	1.11	1.74	1.34	1.57	0.64	1.33

* Raw averages; not adjusted for special circumstances. For example, in cities with a college student population that is large relative to overall population, these pull factors may understate the relative strength of the retail sector. While college students are counted as part of the city population, in general they spend less than other city residents in many retail categories. Outliers were considered for calculating typical pull factors used in the expected sales formula.

Comparison of Pull Factors by Merchandise Category

2008 Index of "Pulling Power" Towns with Populations between 6,100 & 9,300 (Range: Population of Cambridge +/- ~ 20%) (19 Cities)

Rankings

Town	Population	Vehicles, Parts	Furniture Stores	Elec- tronics	Building Materials	Food	Health, Personal	Gasoline Stations	Apparel	Leisure Goods	General Merch.	Misc.	Amuse- ment	Lodging	Eating & Drinking	Repair, Maint.	Personal Services	Taxable \$ Pull Factor
Town name																		
Grand Rapids	# 1	# 2	# 3	# 8	# 4	# 4	# 4	# 1	# 4	# 5	# 4	# 11	# 10	# 3	# 4	# 6	# 8	# 4
Virginia	# 2	# 5	# 7	# 3	# 9	# 8	# 3	# 6	# 2	# 4	# 6	# 15	# 7	# 6	# 6	# 14	# 9	# 6
Thief River Falls	# 3	# 4	# 5	# 4	# 7	# 9	# 5		# 8	# 8	# 7	# 12	# 16	# 5	# 11	# 12	# 11	# 7
St Anthony	# 4					# 3	# 1	# 11	# 5	# 11		# 3	# 15		# 8	# 15	# 12	# 11
Baxter	# 5	# 1	# 2	# 1	# 2	# 2		# 7	# 7	# 3	# 1	# 8	# 6	# 1	# 2	# 7	# 7	# 2
Oak Grove	# 6											# 10			# 19	# 8	# 17	# 19
Detroit Lakes	# 7	# 8	# 4		# 3	# 7	# 6	# 5	# 3	# 9	# 5	# 17	# 2	# 2	# 3	# 3	# 5	# 3
Little Falls	# 8	# 10	# 8	# 5	# 10	# 6		# 2	# 6	# 13	# 8	# 16	# 14	# 7	# 7	# 11	# 13	# 8
Mahtomedi	# 9					# 13		# 9	# 14	# 15		# 18	# 17		# 15	# 16	# 6	# 17
East Grand Forks	# 10	# 13				# 14		# 8	# 11	# 1		# 7	# 8		# 9	# 18	# 15	# 12
Crookston	# 11	# 11			# 8	# 5	# 7	# 12	# 12	# 16		# 2	# 13		# 14	# 5	# 16	# 10
Orono	# 12	# 7	# 6			# 12				# 17		# 14	# 1		# 17		# 2	# 13
Cambridge	# 13	# 6		# 6		# 10	# 2	# 3	# 10	# 12	# 2	# 1	# 12		# 10	# 4	# 10	# 5
Lake Elmo	# 14		# 9		# 5				# 9	# 10		# 13	# 4		# 12	# 17	# 3	# 15
Shorewood	# 15		# 10	# 9						# 6		# 5	# 3		# 18	# 13	# 4	# 16
Waite Park	# 16	# 3	# 1	# 2	# 1	# 1		# 4	# 1	# 2	# 3	# 6	# 11	# 4	# 1	# 1	# 1	# 1
Litchfield	# 17	# 12			# 6	# 11		# 10			# 9	# 19	# 9		# 13	# 10	# 19	# 14
Spring Lake Park	# 18	# 9		# 7					# 13	# 7		# 4	# 5		# 5	# 2	# 14	# 9
St Joseph	# 19					# 15				# 14		# 9			# 16	# 9	# 18	# 18

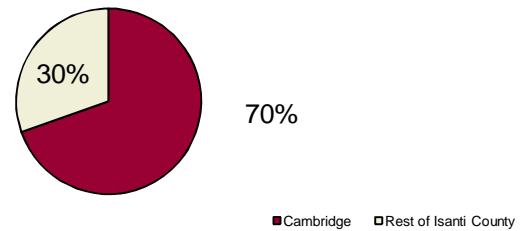
Above are all communities in the population range listed in the title with data available by merchandise category. Adjustments for special circumstances may be necessary for accurate comparisons.

Cambridge & Isanti County Comparison, 2008

It is important to review the retail performance for the whole county and not just the town, in isolation. For example, it is common for county seat towns to have above-average retail performance, while the county overall has a leakage of sales. This is usually because the county seat town doesn't have the critical mass of retail to attract the purchases of everyone in the county. By analyzing county data, town business people can develop strategies to recapture some of the sales being lost to other towns. For counties that have a local option sales tax, the analysis of county sales is extremely important, since lost sales are lost tax dollars. A thorough analysis of county sales can help county officials develop more meaningful economic development plans aimed at recapturing the lost sales.

The table below shows retail sales and number of firms by merchandise category for Cambridge and Isanti County in 2008. Cambridge accounted for 28 percent of the county's firms and 70 percent of the county's sales at the time.

Share of County Sales



Sales by Merchandise Category, Cambridge & Isanti County, 2008

Merchandise Category	Cambridge		Isanti County		City's Share of County Total	
	Taxable Sales (\$millions)	Number of Firms	Taxable Sales (\$millions)	Number of Firms	Sales	Firms
Vehicles & Parts	\$7.20	5	\$10.20	24	70.6%	20.8%
Furniture Stores	NA	NA	\$0.71	7	NA	NA
Electronics	\$1.36	7	\$1.82	9	74.7%	77.8%
Building Materials	NA	NA	\$40.96	19	NA	NA
Food, Groceries	\$6.20	5	\$10.60	13	58.5%	38.5%
Health, Personal Stores	\$2.00	7	\$2.00	9	100.0%	77.8%
Gasoline Stations	\$2.61	6	\$5.85	15	44.6%	40.0%
Apparel	\$0.40	10	\$0.40	13	99.3%	76.9%
Leisure Goods	\$0.79	9	\$1.97	32	40.3%	28.1%
General Merchandise	\$62.41	6	\$62.41	6	100.0%	100.0%
Miscellaneous Retail	\$39.70	24	\$6.41	117	619.3%	20.5%
Non-Store Retailers	\$0.01	6	\$3.10	38	0.3%	15.8%
Amusement & Recreation	\$0.84	4	\$2.39	12	35.1%	33.3%
Accommodations	NA	NA	\$0.16	4	NA	NA
Eating & Drinking Places	\$11.49	17	\$25.81	63	44.5%	27.0%
Repair, Maintenance	\$3.80	16	\$9.75	90	38.9%	17.8%
Personal Service, Laundry	\$0.81	24	\$1.52	61	53.4%	39.3%
Total Sales*	\$147.80	205	\$212.24	720	69.6%	28.5%

Isanti County Retail Trade Overview

Total Taxable and Gross Retail Sales

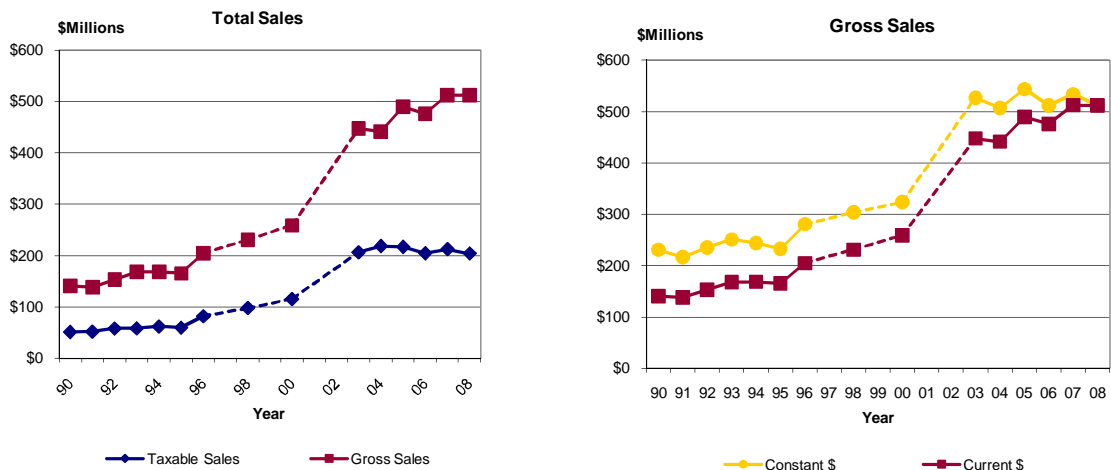
The table below presents gross and taxable retail and services sales for Isanti County from 1990 through 2008. Taxable sales in Isanti County increased 108.5 percent from 1998 to 2008, while the number of firms rose 22 percent. Statewide, taxable sales increased 51.5 percent over the same time period and the number of firms rose 11.3 percent. The per capita sales and pull factor data in this table are based on taxable sales, the more verified sales measure.

The table also presents sales data in constant 2008 dollars. These figures have been adjusted for inflation to reflect their value in 2008. For example, in 1990, taxable sales in Isanti County totaled \$51.62 million, an amount worth \$84.63 million in 2008 dollars. In constant dollars, gross sales grew 68.6 percent between 1996 and 2008. Constant dollar taxable sales increased 58.5 percent over the same time period.

Year	Estimated Population	Current Dollars		Constant 2008 Dollars		Number of Firms	Per Capita Sales	Pull Factor
		Gross Sales* (\$millions)	Taxable Sales (\$millions)	Gross Sales* (\$millions)	Taxable Sales (\$millions)			
1990	25,921	\$140.82	\$51.62	\$230.86	\$84.63	487	\$1,992	0.45
1991	26,395	\$138.44	\$52.25	\$216.31	\$81.64	492	\$1,979	0.45
1992	26,676	\$153.19	\$58.40	\$235.68	\$89.84	498	\$2,189	0.45
1993	27,467	\$168.17	\$58.80	\$250.99	\$87.76	518	\$2,141	0.42
1994	27,772	\$168.60	\$62.26	\$244.35	\$90.24	487	\$2,242	0.41
1995	28,258	\$165.56	\$60.09	\$233.18	\$84.63	463	\$2,126	0.37
1996	28,936	\$204.99	\$82.24	\$280.80	\$112.66	531	\$2,842	0.42
1997	29,506	NA	NA	NA	NA	NA	NA	NA
1998	30,036	\$231.04	\$97.81	\$304.00	\$128.70	590	\$3,256	0.47
1999	30,887	NA	NA	NA	NA	NA	NA	NA
2000	31,287	\$258.98	\$115.62	\$323.73	\$144.52	549	\$3,695	0.49
2001	32,579	NA	NA	NA	NA	NA	NA	NA
2002	33,799	NA	NA	NA	NA	NA	NA	NA
2003	35,372	\$447.81	\$207.10	\$526.84	\$243.64	680	\$5,855	0.66
2004	36,546	\$441.41	\$218.06	\$507.37	\$250.64	717	\$5,967	0.64
2005	37,664	\$489.48	\$216.64	\$543.87	\$240.71	739	\$5,752	0.60
2006	38,576	\$476.29	\$204.34	\$512.14	\$219.72	717	\$5,297	0.55
2007	38,921	\$512.50	\$212.24	\$533.86	\$221.08	710	\$5,453	0.56
2008	38,576	\$512.41	\$203.97	\$512.41	\$203.97	720	\$5,287	0.55
10 yr Change '98 to '08	28.4%	121.8%	108.5%	68.6%	58.5%	22.0%	62.4%	18.3%
3 yr Change '05 to '08	2.4%	4.7%	-5.8%	-5.8%	-15.3%	-2.6%	-8.1%	-8.4%

*Gross sales figures are self-reported by firms and not audited by the Dept. of Revenue for accuracy.

Isanti County: Total Retail Sales



Isanti County Components of Change, 2005 to 2008

Category	Taxable Sales 2005	Taxable Sales 2008	Dollar Change	Percent Change
Vehicles & Parts	\$14,136,679	\$10,200,703	-\$3,935,976	-27.84%
Furniture Stores	\$1,346,116	\$710,361	-\$635,755	-47.23%
Electronics	\$543,738	\$1,822,878	+\$1,279,140	+235.25%
Building Materials	\$49,844,875	\$40,964,771	-\$8,880,104	-17.82%
Food, Groceries	\$8,469,981	\$10,602,871	+\$2,132,890	+25.18%
Health, Personal Stores	\$1,781,265	\$2,003,883	+\$222,618	+12.50%
Gasoline Stations	\$7,506,818	\$5,848,709	-\$1,658,109	-22.09%
Apparel	\$344,793	\$401,732	+\$56,939	+16.51%
Leisure Goods	\$956,684	\$1,965,004	+\$1,008,320	+105.40%
General Merchandise Stores	\$66,527,126	\$62,410,497	-\$4,116,629	-6.19%
Miscellaneous Retail	\$4,664,846	\$6,410,050	+\$1,745,204	+37.41%
Accommodations	\$142,475	\$158,423	+\$15,948	+11.19%
Eating & Drinking Places	\$23,241,850	\$25,808,548	+\$2,566,698	+11.04%
Total Retail and Services Sales	\$216,635,052	\$203,969,961	-\$12,665,091	-5.85%

Figures not adjusted for inflation.

Dollar Changes by Category (in Millions) 2005 - 2008



Pull Factors By Merchandise Category Isanti County

The following tables and charts depict pull factors in Isanti County from 1990 to 2000* by merchandise category. Pull factors are a measure of trade area size that provide a useful measure of changes over time because they account for changes in population and state-wide industry trends.

Category Descriptions

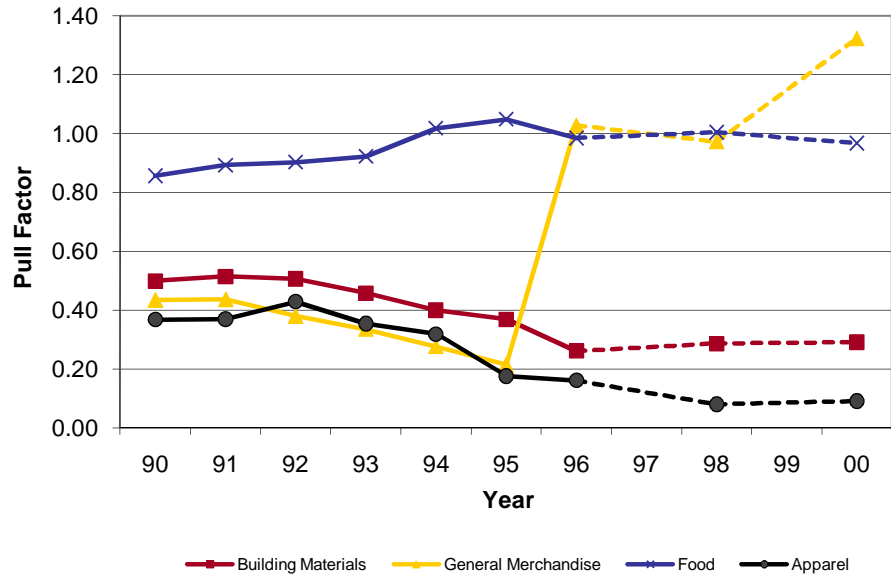
Building Materials: Includes retail establishments primarily engaged in selling lumber and other building materials; paint, glass, and wallpaper; hardware; nursery stock; and lawn and garden supplies.

General Merchandise: Includes retail stores which sell a number of lines of merchandise, such as dry goods, apparel and accessories, furniture and home furnishings, small wares, hardware, and food. The stores included in this group are known as department stores, variety stores, general merchandise stores, catalog showrooms, warehouse clubs, and general stores.

Food: This group is comprised of retail stores primarily engaged in selling food for home preparation and consumption.

Apparel: Retail stores primarily engaged in selling clothing of all kinds and related articles for personal wear and adornment. Not included are establishments which meet the criteria for Department Stores even though most of their receipts are from the sale of apparel and apparel accessories.

Pull Factors by Merchandise Category (1 of 3)



**Pull Factors by Merchandise Category
Isanti County, 1990-2000**

Year	Building Materials	General Merchandise	Food	Apparel
1990	0.50	0.43	0.86	0.37
1991	0.51	0.44	0.89	0.37
1992	0.51	0.38	0.90	0.43
1993	0.46	0.34	0.92	0.35
1994	0.40	0.28	1.02	0.32
1995	0.37	0.21	1.05	0.18
1996	0.26	1.03	0.98	0.16
1997	NA	NA	NA	NA
1998	0.29	0.97	1.00	0.08
1999	NA	NA	NA	NA
2000	0.29	1.32	0.97	0.09
% Change, '90 to '00				
	-41.71%	204.71%	12.94%	-75.35%
% Change, '98 to '00				
	1.83%	36.20%	-3.69%	13.77%

*Due to a change in how firms are categorized beginning with fiscal year 2003, only data through fiscal year 2000 are presented in this section.

These pull factors are calculated using taxable sales. Although taxable sales do not capture the full extent of sales in stores with a large number of un-taxed goods, like grocery and apparel stores, these data are audited by the Minnesota Department of Revenue. Since sales tax laws apply statewide, all cities are compared on the same basis.

Pull Factors By Merchandise Category Isanti County

The following tables and charts depict pull factors in Isanti County from 1990 to 2000* by merchandise category. Pull factors are a measure of trade area size that provide a useful measure of changes over time because they account for changes in population and state-wide industry trends.

Category Descriptions

Furniture: This group includes retail stores selling goods used for furnishing the home such as furniture, floor coverings, draperies, glass and chinaware, domestic stoves, refrigerators, and other household electric and gas appliances.

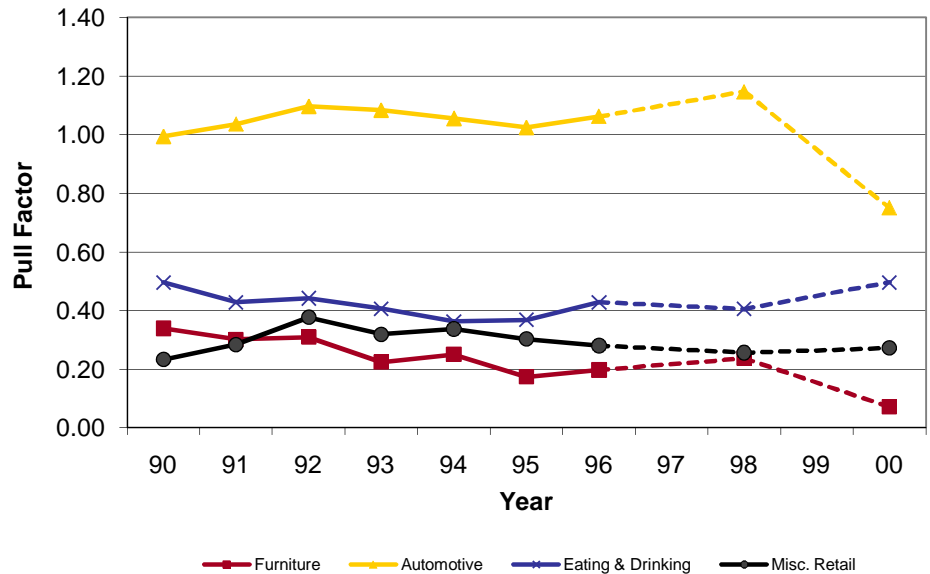
Automotive: Establishments selling new and used automobiles, boats, recreational vehicles and utility trailers, and motorcycles and mopeds; dealers selling new automobile parts and accessories; and gasoline service stations.

Eating & Drinking: This major group includes retail establishments engaged in selling prepared food and drinks for consumption on the premises. Also included are caterers which serve prepared food other than at the place of business and lunch counters and refreshment stands selling prepared foods and drinks for immediate consumption.

Miscellaneous Retail: This category includes retail establishments not elsewhere classified. These establishments fall into the following categories: liquor stores; used merchandise stores; miscellaneous shopping goods stores; nonstore retailers, fuel dealers, florists, cigar stores and stands, news dealers and newsstands, and miscellaneous retail stores not elsewhere classified.

*Due to a change in how firms are categorized beginning with fiscal year 2003, only data through fiscal year 2000 are presented in this section.

Pull Factors by Merchandise Category (2 of 3)



**Pull Factors by Merchandise Category
Isanti County, 1990-2000**

Year	Furniture	Automotive	Eating & Drinking	Misc. Retail
1990	0.34	0.99	0.50	0.23
1991	0.30	1.04	0.43	0.28
1992	0.31	1.10	0.44	0.38
1993	0.22	1.08	0.41	0.32
1994	0.25	1.06	0.36	0.34
1995	0.17	1.02	0.37	0.30
1996	0.20	1.06	0.43	0.28
1997	NA	NA	NA	NA
1998	0.24	1.15	0.41	0.26
1999	NA	NA	NA	NA
2000	0.07	0.75	0.50	0.27

% Change, '90 to '00	-78.97%	-24.49%	0.03%	16.95%
----------------------	---------	---------	-------	--------

% Change, '98 to '00	-69.89%	-34.54%	22.36%	6.25%
----------------------	---------	---------	--------	-------

These pull factors are calculated using taxable sales. Although taxable sales do not capture the full extent of sales in stores with a large number of un-taxed goods, like grocery and apparel stores, these data are audited by the Minnesota Department of Revenue. Since sales tax laws apply statewide, all cities are compared on the same basis.

Pull Factors By Merchandise Category Isanti County

The following tables and charts depict pull factors in Isanti County from 1990 to 2000* by merchandise category. Pull factors are a measure of trade area size that provide a useful measure of changes over time because they account for changes in population and state-wide industry trends.

Category Descriptions

Lodging: Includes establishments engaged in providing lodging, or lodging and meals, and camping facilities.

Personal Services: includes establishments primarily engaged in providing services generally to individuals, such as barber and beauty shops, drycleaning plants, laundries, and photographic studios.

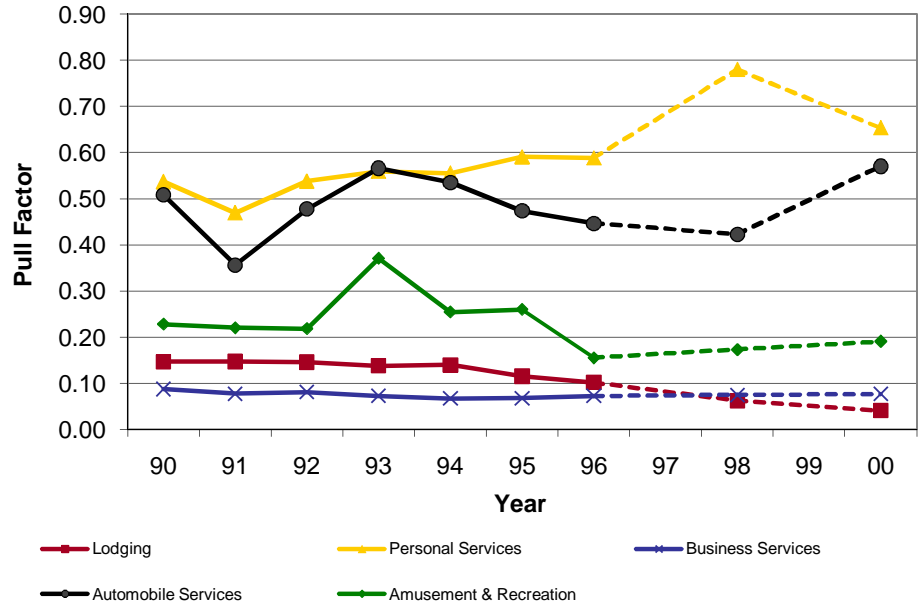
Business Services: Includes establishments primarily engaged in providing services, not elsewhere classified, to business establishments on a contract or fee basis.

Automobile Services: Includes establishments primarily engaged in furnishing automotive repair, rental, leasing, parking, and other services.

Amusement and Recreation: This group includes establishments primarily engaged in providing amusement, recreation, or entertainment services, not elsewhere classified.

*Due to a change in how firms are categorized beginning with fiscal year 2003, only data through fiscal year 2000 are presented in this section.

Pull Factors by Merchandise Category (3 of 3)



**Pull Factors by Merchandise Category
Isanti County, 1990-2000**

Year	Lodging	Personal Services	Business Services	Automobile Services	Amusement & Recreation
1990	0.15	0.54	0.09	0.51	0.23
1991	0.15	0.47	0.08	0.36	0.22
1992	0.15	0.54	0.08	0.48	0.22
1993	0.14	0.56	0.07	0.57	0.37
1994	0.14	0.56	0.07	0.54	0.25
1995	0.12	0.59	0.07	0.47	0.26
1996	0.10	0.59	0.07	0.45	0.15
1997	NA	NA	NA	NA	NA
1998	0.06	0.78	0.07	0.42	0.17
1999	NA	NA	NA	NA	NA
2000	0.04	0.65	0.08	0.57	0.19
<hr/>					
% Change, '90 to '00	-72.05%	21.80%	-12.27%	12.26%	-16.41%
% Change, '98 to '00	-34.21%	-16.21%	2.62%	34.91%	10.05%

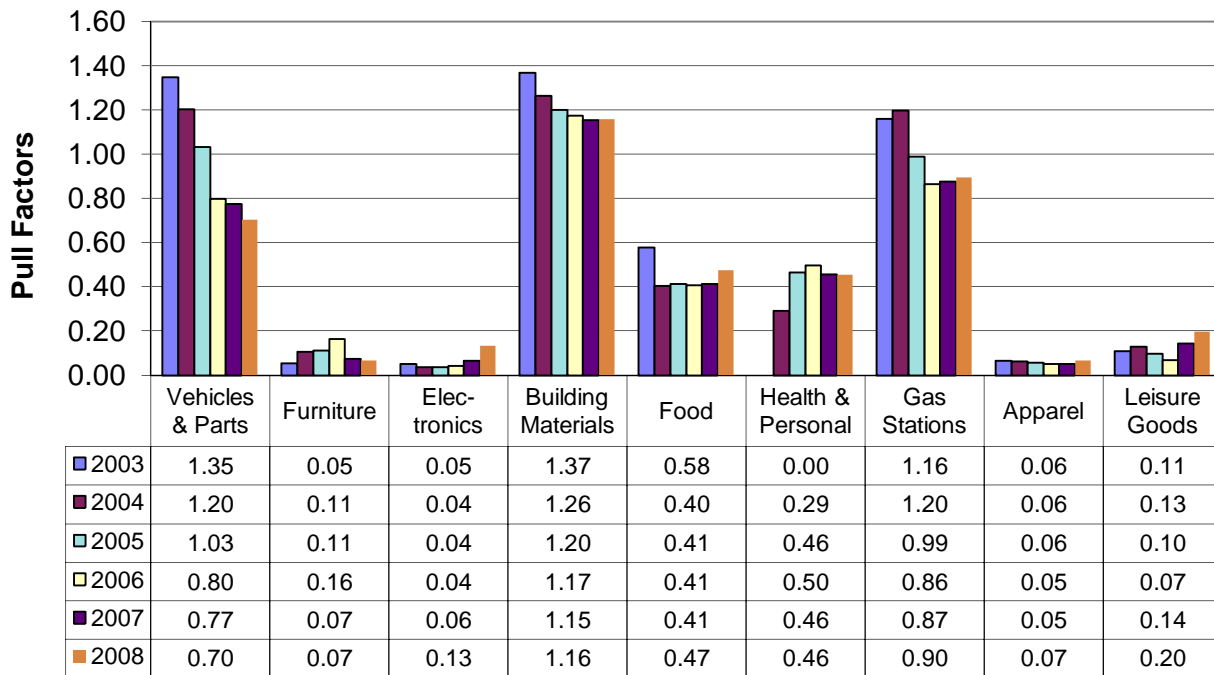
These pull factors are calculated using taxable sales. Although taxable sales do not capture the full extent of sales in stores with a large number of un-taxed goods, like grocery and apparel stores, these data are audited by the Minnesota Department of Revenue. Since sales tax laws apply statewide, all cities are compared on the same basis.

Pull Factors By Merchandise Category

Isanti County

The following tables and charts depict pull factors in Isanti County from 2003 to 2008* by merchandise category. Pull factors are a measure of trade area size that provide a useful measure of changes over time because they account for changes in population and state-wide industry trends.

Pull Factor by NAICS Merchandise Category (1 of 2)



NAICS Category Descriptions

Motor Vehicles & Parts: Establishments that sell new & used autos, boats, motorcycles, golf carts, RV's, campers, trailers, tires, and parts.

Furniture: Stores that sell furniture, beds, carpeting, window coverings, lamps, china, kitchenware, & woodburning stoves.

Electronics: Establishments primarily engaged in retailing household-type appliances, sewing machines, cameras, computers, and other electronic goods.

Building Materials: Establishments that sell lumber, hardware, paint, wallpaper, tile, hardwood floors, roofing, fencing, ceiling fans, lawn equipment, garden centers, and feed stores.

Food: Grocery stores, deli's, bakery, & butcher shops that sell food to be prepared at home. Liquor stores.

Health & Personal: Pharmacies, food supplements, vision supplies, cosmetics, & hearing aid stores.

Gas Stations: Retailers that sell fuel along with convenience store items.

Apparel: New clothing and accessories, jewelry, shoes, bridal shops, clock shops, and luggage stores.

Leisure Goods: Sporting goods, books, music, hobby stores, fabric shops, and toy stores.

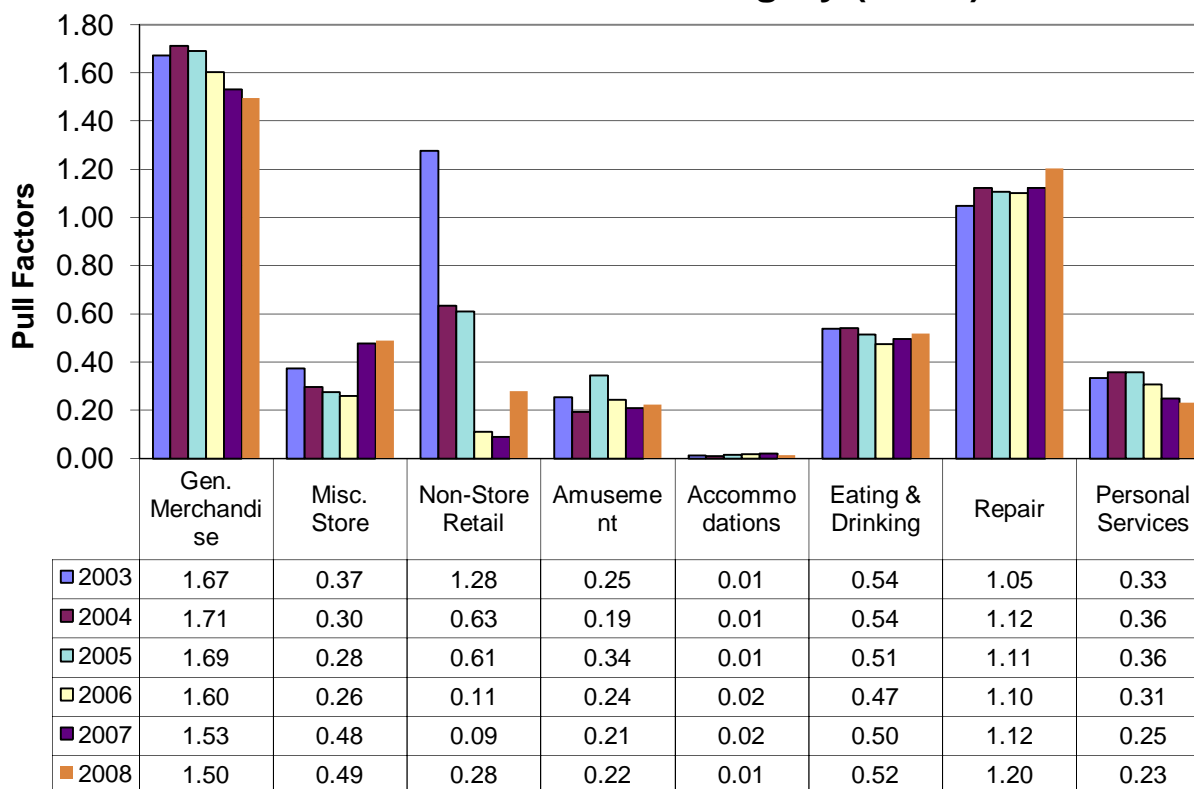
*Caution should be used when comparing pull factors before 2003 to those in later years due to the switch from SIC to NAICS.

Recent Trends By Merchandise Category

Isanti County

The following tables and charts depict pull factors in Isanti County from 2003 to 2008* by merchandise category. Pull factors are a measure of trade area size that provide a useful measure of changes over time because they account for changes in population and state-wide industry trends.

**Pull Factor by NAICS
Merchandise Category (2 of 2)**



NAICS Category Descriptions

General Merchandise: Establishments that sell a mixed line of goods. Examples are department stores, supercenters, and dollar stores.

Miscellaneous Store Retailers: Stores not covered in other categories such as florists, office supplies, pets, antiques, tobacco, art, used merchandise, and trophies.

Non-Store Retail: Retailers that do not use stores. This includes mail order, internet selling, bazaars, vending machines, fuel oil dealers, firewood dealers, door-to-door sales, and produce stands.

Amusement: Establishments such as golf courses, bowling lanes, marinas, amusement parks, water parks, shooting ranges, pool halls, horseback riding, ballrooms, health club facilities, ski hills, and casinos.

Lodging: Seasonal resorts, hotels, boarding houses, bed & breakfast, campgrounds, RV parks.

Eating & Drinking: Restaurants, donut shops, coffee house, cafeteria, caterers, taverns, and nightclubs,

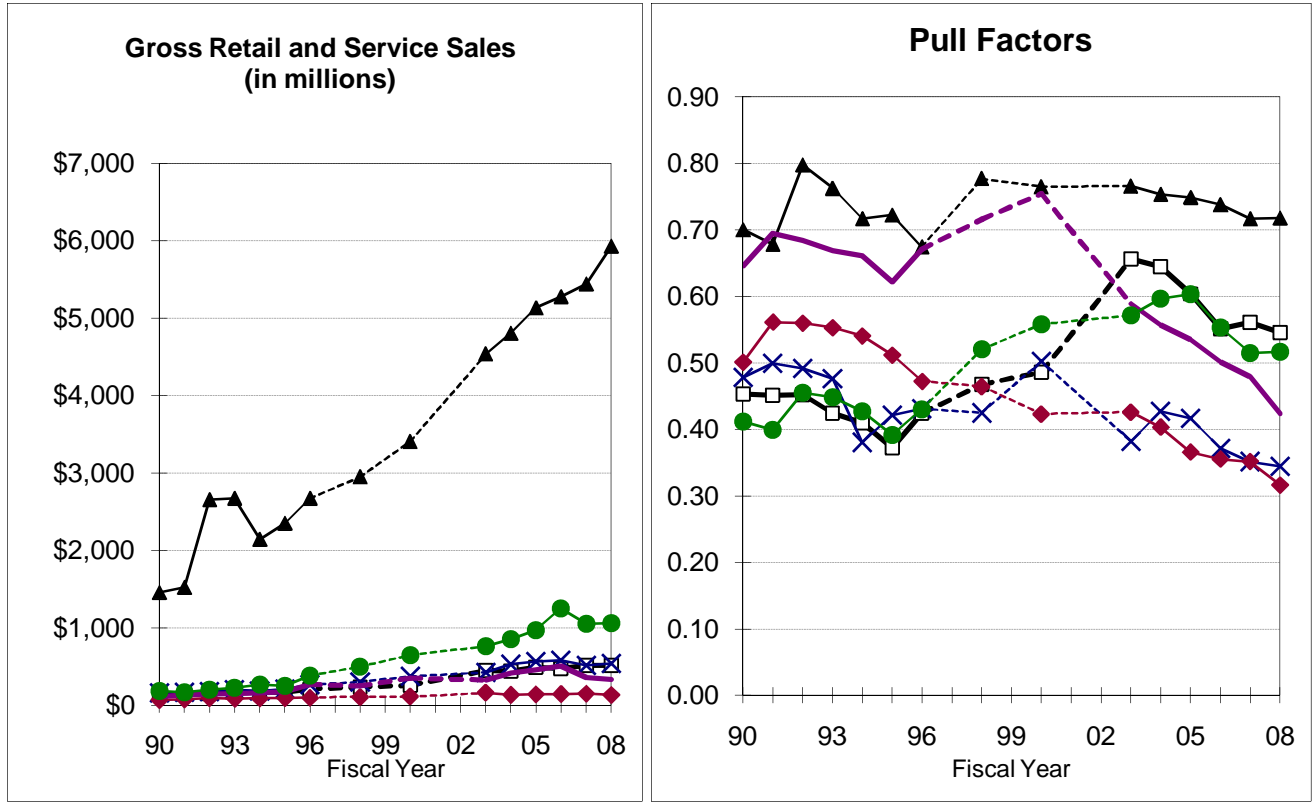
Repair: Businesses that return equipment to working order. Examples: cars, lawnmowers, small engines, knives, shoes, computers, furniture, and appliances.

Personal Services: Barbers, beauty salons, tanning facilities, funeral homes, laundromats, dry cleaners, pet groomers, kennels, and photo finishing.

*Caution should be used when comparing pull factors before 2003 to those in later years due to the switch from SIC to NAICS.

Comparison with Neighboring Counties

Isanti County



- Isanti County
× Chisago County
— Mille Lacs County
- ▲ Anoka County
◆ Kanabec County
● Sherburne County

Comparison with Neighboring Counties, 2008

Town	Population	Gross Sales (\$millions)	Taxable Sales (\$millions)	Number of Firms	Per Capita Taxable Sales	Pull Factor (Taxable Sales)
Isanti County	39,105	\$512.41	\$203.97	720	\$5,216	0.55
Anoka County	327,090	\$5,931.88	\$2,244.46	5,694	\$6,862	0.72
Chisago County	50,128	\$538.40	\$165.34	1,050	\$3,290	0.34
Kanabec County	16,090	\$133.09	\$48.62	349	\$3,021	0.32
Mille Lacs County	26,354	\$335.83	\$106.66	590	\$4,044	0.42
Sherburne County	86,287	\$1,062.90	\$432.87	1,583	\$4,938	0.52

Trade Area Analysis of Retail Sales

Isanti County

The following tables provide information on retail sales by merchandise category. "Potential sales" is a standard to which actual performance is compared. In calculating potential sales, population and income characteristics are taken into account. Potential sales can be used as a guideline or "par value" in analyzing retail strength.

Deviations from these norms can be analyzed to first judge whether they should be considered relevant. If the differences appear to be significant (whether in dollar amounts or relatively with percentages), additional consideration is merited. Categories with undesirable performance may be further examined for potential corrective action. It is also important to determine whether or not the situation is relatively uncontrollable due to external or extenuating circumstances. In cases of favorable differences from expectations, the positive aspects should be identified and built upon.

Trade Area Analysis by Merchandise Category, 2008

Merchandise Group	Potential Sales (\$millions)	Actual Sales (\$millions)	Variance Between Actual & Potential		Trade Area Pop. Gain or Loss	Number of Firms	Percent of Total Sales
			In Dollars (millions)	As % of Expected			
Vehicles & Parts	\$11.68	\$10.20	-\$1.48	-12.7%	-4,894	24	5.0%
Furniture Stores	\$8.47	\$0.71	-\$7.76	-91.6%	-35,342	7	0.3%
Electronics	\$11.13	\$1.82	-\$9.30	-83.6%	-32,256	9	0.9%
Building Materials	\$28.48	\$40.96	+\$12.49	+43.8%	16,913	19	20.1%
Food, Groceries	\$18.05	\$10.60	-\$7.44	-41.2%	-15,912	13	5.2%
Health, Personal Stores	\$3.54	\$2.00	-\$1.54	-43.4%	-16,758	9	1.0%
Gasoline Stations	\$5.26	\$5.85	+\$0.59	+11.2%	4,304	15	2.9%
Apparel	\$4.86	\$0.40	-\$4.46	-91.7%	-35,390	13	0.2%
Leisure Goods	\$8.08	\$1.97	-\$6.12	-75.7%	-29,198	32	1.0%
General Merchandise Stores	\$33.59	\$62.41	+\$28.82	+85.8%	33,095	6	30.6%
Miscellaneous Retail	\$10.57	\$6.41	-\$4.16	-39.4%	-15,183	117	3.1%
Amusement & Recreation	\$8.64	\$2.39	-\$6.25	-72.3%	-27,896	12	1.2%
Accommodations	\$10.31	\$0.16	-\$10.15	-98.5%	-37,983	4	0.1%
Eating & Drinking Places	\$40.21	\$25.81	-\$14.40	-35.8%	-13,817	63	12.7%
Repair, Maintenance	\$6.53	\$9.75	+\$3.22	+49.3%	19,015	90	4.8%
Personal Services, Laundry	\$5.29	\$1.52	-\$3.76	-71.2%	-27,464	61	0.7%
Total Taxable Retail & Service	\$297.04	\$203.97	-\$93.07	-31.3%	-12,087	720	100.0%

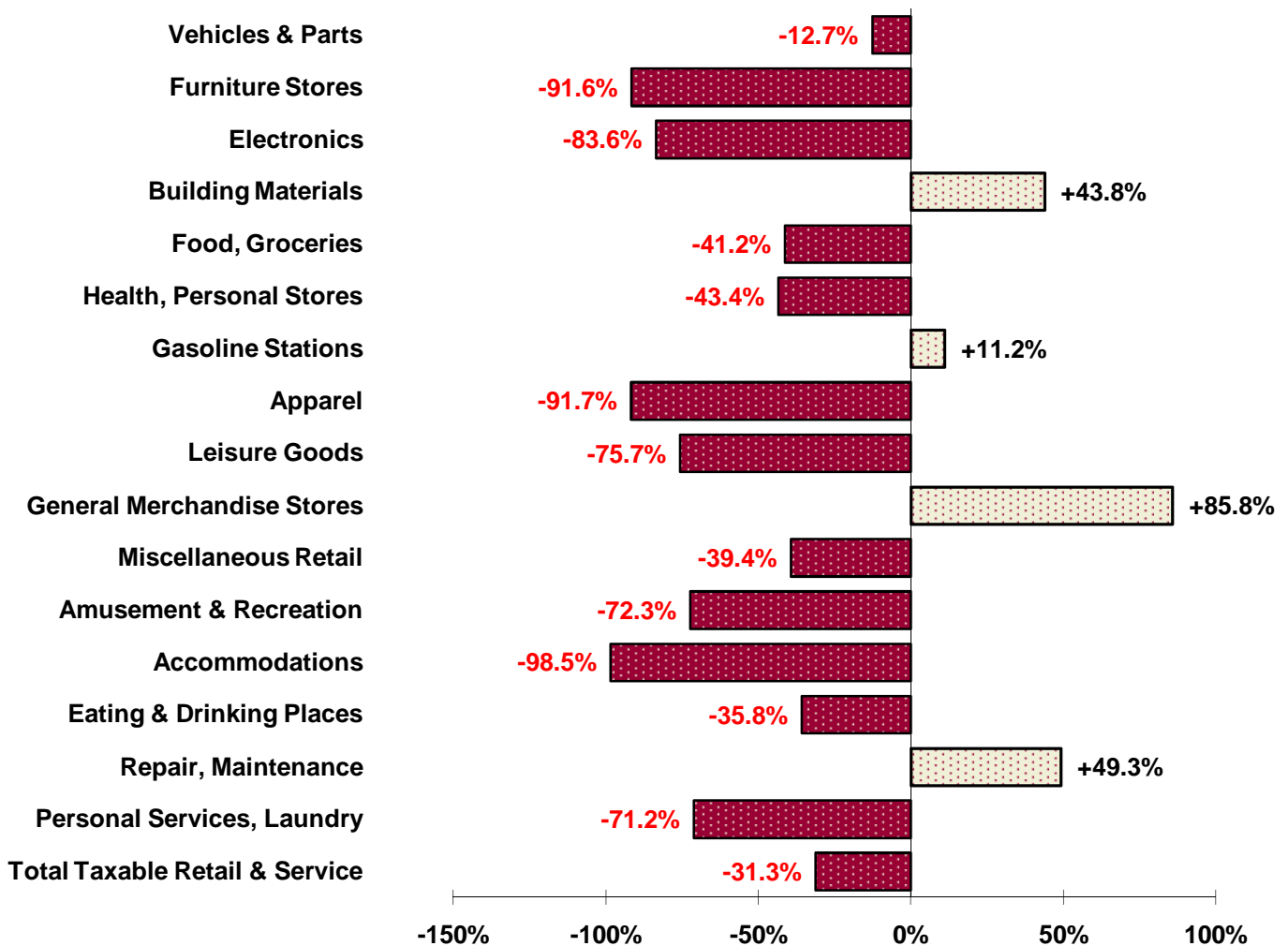
*All retail and service categories are included in Total Sales, including some categories not shown. Therefore, the merchandise groups shown here generally will not sum to Total Sales.

Summary of Isanti County Retail Trade

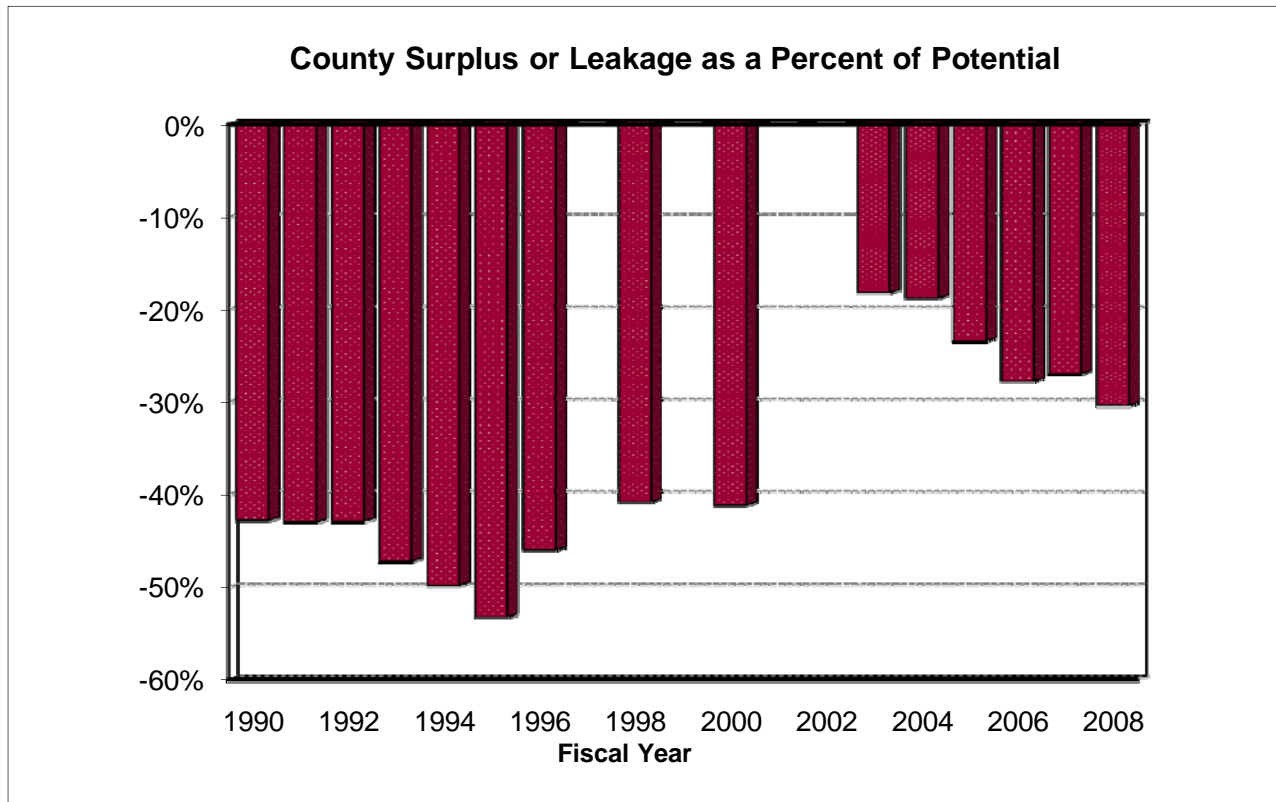
The chart below depicts the percentage amount Isanti County's actual sales were above or below potential sales in 2007 by merchandise group. Of the 16 merchandise categories with reported data, sales in 4 of the categories were above what would be expected based on the county's population and income characteristics as well as statewide spending patterns. The strongest merchandise group by this standard is the General Merchandise Stores category, which has a 85.8 percent surplus. Overall, Isanti County had a retail sales leakage of 31.3 percent.

It is important to note that variations in a county's relative retail performance may occur for a variety of reasons, some of which are beyond the control of local policy. Proximity to larger population centers, management, marketing, and transportation patterns are just a few factors that can cause the retail sales of a particular county to deviate substantially from potential sales. It is important that decision-makers consider these influences when constructing policies, plans, or projects.

Percentage Above or Below Potential Sales, 2008



Isanti County Retail Trade Surplus or Leakage



Fiscal Year	Population Estimate	Index of Income	Potential Sales (in millions)	Actual Sales (in millions)	Surplus or Leakage (in millions)	Surplus or Leakage as % of Potential	Trade Area Population Gain or Loss
1990	25,921	0.79	\$90.3	\$51.6	-\$38.6	-42.8%	-11,097
1991	26,395	0.79	\$91.7	\$52.2	-\$39.5	-43.0%	-11,357
1992	26,676	0.79	\$102.3	\$58.4	-\$43.9	-42.9%	-11,450
1993	27,467	0.80	\$111.4	\$58.8	-\$52.6	-47.2%	-12,973
1994	27,772	0.82	\$124.1	\$62.3	-\$61.8	-49.8%	-13,838
1995	28,258	0.80	\$128.6	\$60.1	-\$68.5	-53.3%	-15,054
1996	28,936	0.79	\$152.3	\$82.2	-\$70.1	-46.0%	-13,315
1997	29,506	0.79	NA	NA	NA	NA	NA
1998	30,036	0.79	\$165.2	\$97.8	-\$67.4	-40.8%	-12,256
1999	30,887	0.79	NA	NA	NA	NA	NA
2000	31,287	0.83	\$196.5	\$115.6	-\$80.9	-41.2%	-12,879
2001	32,579	0.83	NA	NA	NA	NA	NA
2002	33,799	0.82	NA	NA	NA	NA	NA
2003	35,372	0.80	\$253.1	\$207.1	-\$46.0	-18.2%	-6,433
2004	36,546	0.79	\$268.5	\$218.1	-\$50.4	-18.8%	-6,864
2005	37,664	0.79	\$282.8	\$216.6	-\$66.2	-23.4%	-8,815
2006	38,576	0.76	\$282.9	\$204.3	-\$78.5	-27.8%	-10,708
2007	38,921	0.77	\$290.6	\$212.2	-\$78.4	-27.0%	-10,498
2008	38,576	0.79	\$293.0	\$204.0	-\$89.1	-30.4%	-11,723

Demographic Characteristics

Income, 2004

Total Personal Income is derived from the Bureau of Economic Analysis data. Median household income and income distribution data are obtained from the 2004 Census estimates. Median household income represents the midpoint of income for all households in the town. The index of income measures the county's per capita income relative to the state. For example, an index number of 110 indicates the county's per capita income is 10 percent above the state average (which was \$36,162 in 2004).

	Total Personal Income (\$000)	Median Household Income	Index of Income
Isanti County	\$1,050,497	\$55,345	79.6
Anoka County	\$10,820,020	\$62,106	93.7
Chisago County	\$1,398,005	\$61,376	80.2
Kanabec County	\$393,527	\$42,586	67.9
Mille Lacs County	\$598,636	\$41,527	66.3
Sherburne County	\$2,154,430	\$64,650	75.7
State	\$184,571,393	\$51,202	100.0

Income Distribution by Household, 2000

	Less than \$20,000	\$20,000 to \$39,999	\$40,000 to \$59,999	\$60,000 and over
Isanti County	14.6%	23.5%	24.1%	37.9%
Anoka County	10.2%	18.8%	23.2%	47.8%
Chisago County	13.5%	20.9%	24.8%	40.8%
Kanabec County	22.3%	29.5%	26.4%	21.7%
Mille Lacs County	25.0%	28.6%	23.7%	22.7%
Sherburne County	10.4%	18.7%	24.4%	46.4%
State	17.6%	24.2%	21.3%	36.8%

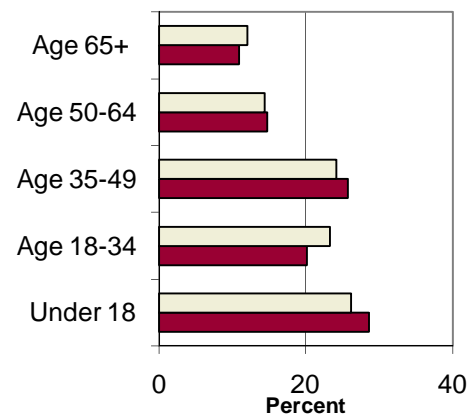
Relative to the state, Isanti County has fewer low-income households (earning less than \$20,000 annually) and fewer higher-income households (earning more than \$60,000 annually).

Population

In 2000, Isanti County had 11,266 households and an average of 2.78 persons per household. There were 1.9 million households statewide with an average of 2.59 persons per household. Compared to the state, Isanti County had a higher proportion of young people (under 18) and a lower proportion of older people (age 65+).

Age Distribution of Population, 2000

	Isanti County		State	
		%		%
Total	31,287		4,919,479	
Under 18	8,934	28.6	1,286,894	26.2
Age 18-34	6,295	20.1	1,143,572	23.2
Age 35-49	8,041	25.7	1,188,429	24.2
Age 50-64	4,610	14.7	706,318	14.4
Age 65+	3,407	10.9	594,266	12.1



State of Minnesota Per Capita Taxable Retail Sales & Threshold Levels for Selected Goods and Services

2008

Threshold level refers to the number of people per business, which can be used as a general guide for determining the "critical mass" necessary to support a business. These are broad averages for the state as a whole and do not reflect differences in income, tourism, agglomeration, establishment, etc. Further, the business counts are based on the number of sales tax returns filed and are converted to "full-time equivalents." Multiplying people per business by sales per capita yields average sales per firm. In addition to state averages, averages for the non-metropolitan regions were calculated by excluding the seven county Minneapolis-St. Paul metropolitan region.

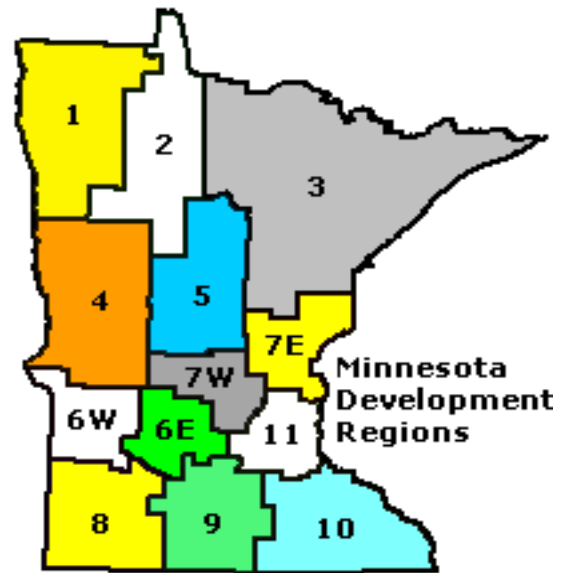
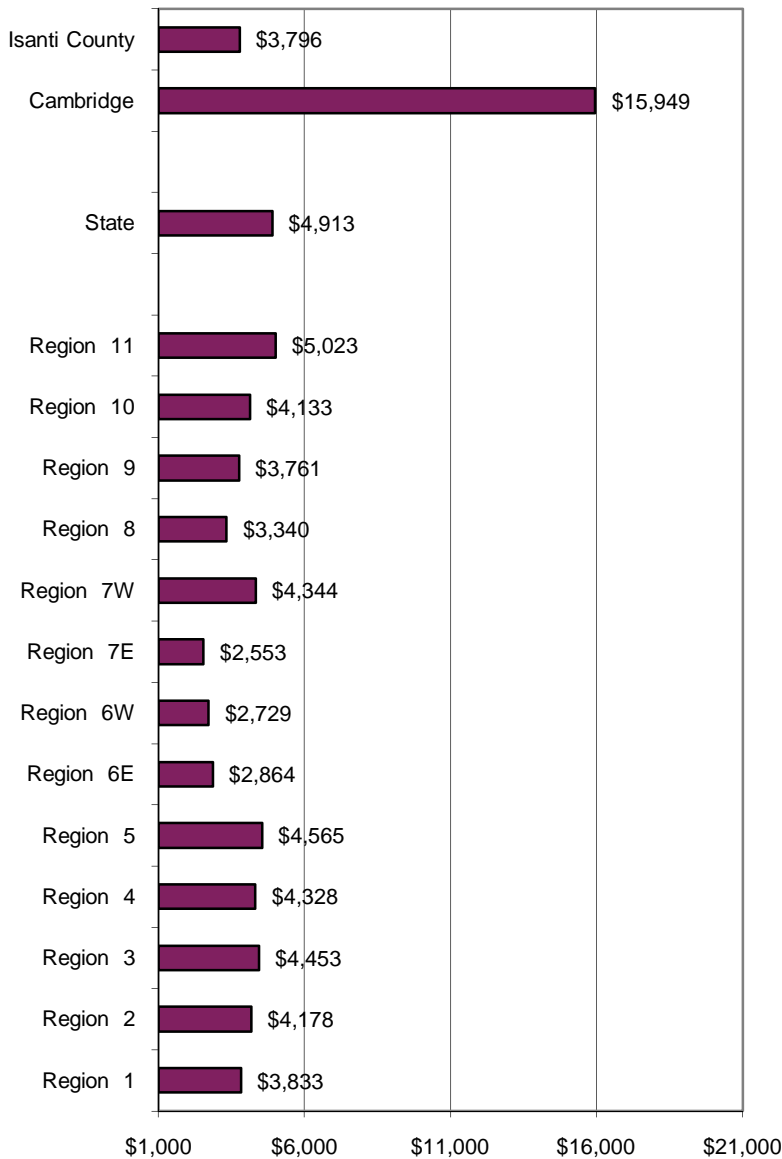
Business Activity / Store Type	People Per Business		Sales Per Capita		
	State	Non-Metro	State	Non-Metro	Cambridge
RETAIL TRADE					
441 Vehicles, Parts	1,663	1,297	\$375.94	\$352.16	\$936.12
442 Furniture Stores	2,097	2,457	\$272.69	\$169.48	NA
443 Electronics	2,626	3,498	\$358.05	\$157.65	\$176.98
444 Building Materials	1,974	1,506	\$916.40	\$905.24	NA
445 Food and Beverage Stores	1,394	1,258	\$580.72	\$489.70	\$805.70
446 Health, Personal Stores	3,201	3,679	\$114.01	\$59.94	\$260.43
447 Gasoline Stations	2,403	1,809	\$169.31	\$196.44	\$338.99
448 Clothing & Accessory Stores	1,304	1,676	\$156.52	\$94.46	\$51.88
451 Leisure Goods	1,158	1,120	\$260.11	\$173.20	\$103.06
452 General Merchandise	4,183	3,390	\$1,080.94	\$1,077.51	\$8,113.69
453 Miscellaneous Merchandise	328	311	\$340.14	\$261.22	\$5,160.85
454 Non-store Retail	843	938	\$288.25	\$81.20	\$1.34
Retail Total			\$4,913.09	\$4,018.21	\$15,949.05
INFORMATION					
511 Publishing Industry	7,555	22,315	\$27.03	\$1.00	
512 Movie & Recording Industry	12,858	58,780	\$19.47	\$8.36	
515 Broadcasting	32,833	92,692	\$92.32	\$2.81	
516 Info -Internet Publ/Brcst	130,510	30,897	\$0.15	\$1.40	
517 Telecommunications	5,846	4,471	\$794.94	\$45.30	
518 Internet Service	6,650	NA	\$66.73	NA	
519 Other Information Services	3,181	NA	\$196.04	NA	
FINANCE AND INSURANCE					
522 Credit Intermediation	6,127	7,347	\$38.47	\$4.33	
523 Securities, Commodities	23,947	160,665	\$2.22	\$0.17	
524 Insurance Carriers	10,462	30,506	\$2.23	\$0.03	
525 Funds, Trusts	137,379	NA	\$5.03	NA	
REAL ESTATE AND RENTAL AND LEASING					
531 Real Estate	3,147	5,285	\$30.71	\$18.98	
532 Rental, Leasing Services	2,535	3,713	\$289.48	\$82.58	
533 Lessors Nonfinancial Assets	401,569	NA	\$1.46	NA	
PROFESSIONAL, SCIENTIFIC, AND TECHNICAL SERVICES					
541 Prof, Scientific, Technical Services	449	771	\$237.70	\$70.14	
551 Mgmt Of Companies	23,099	109,545	\$10.57	\$1.52	
ADMINISTRATIVE & SUPPORT; WASTE MGMT & REMEDIATION SVCS					
561 Admin, Support Services	499	579	\$16.54	\$123.40	
562 Waste Mgmt, Remediation	12,795	15,649	\$12.46	\$0.66	
EDUCATIONAL SVCS; HEALTH & SOCIAL ASSISTANCE					
611 Educational Services	4,322	5,657	\$16.54	\$14.34	
621 Health -Ambulatory Care	1,273	1,559	\$12.46	\$8.53	
622 Health -Hospitals	35,036	109,545	\$14.23	\$7.82	
623 Health -Nursing,Home Care	13,559	14,785	\$1.51	\$1.35	
624 Health -Social Assistance	15,867	39,508	\$2.29	\$1.82	
ARTS, ENTERTAINMENT & RECREATION					
711 Performing Art, Spectator Sports	3,302	5,239	\$53.50	\$6.81	
712 Museums, Historical Sites	30,529	77,741	\$3.65	\$0.39	
713 Amusement, Gambling, Recr	2,303	1,914	\$278.02	\$137.83	
ACCOMMODATION & FOOD SERVICES					
721 Accommodation	2,064	1,183	\$331.68	\$289.41	NA
722 Food Services, Drinking Places	463	444	\$1,293.92	\$951.97	\$1,493.22
OTHER SERVICES					
811 Repair, Maintenance	568	422	\$210.23	\$209.41	
812 Personal, Laundry Service	595	513	\$170.11	\$52.84	
TOTAL RETAIL AND SERVICES			\$9,558.29	\$6,563.12	

Compare the Community to the Region

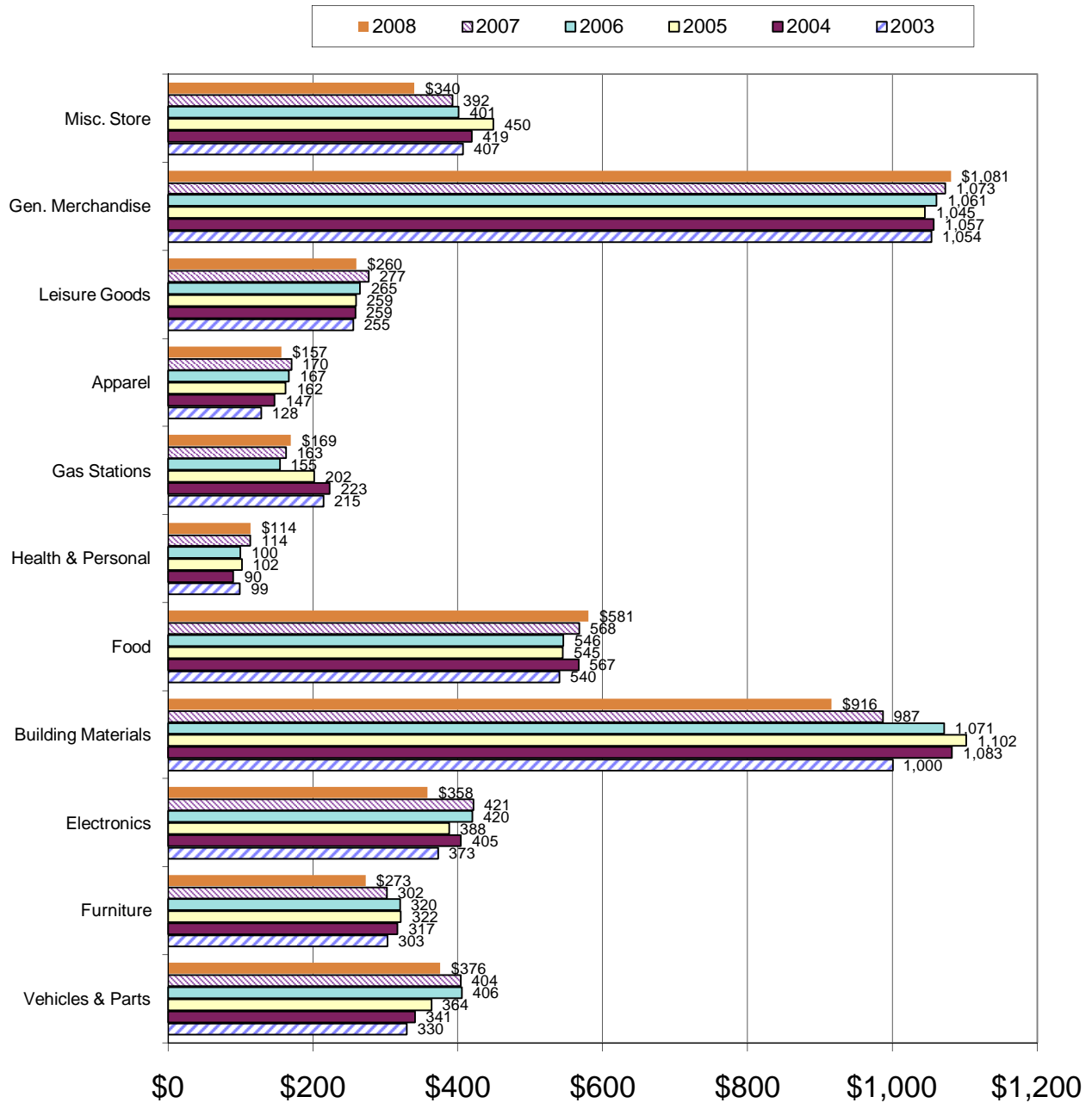
Cambridge and Isanti County

On other pages of this report we compared communities using a combination of retail sectors and service sectors. The information on this page only includes businesses in Retail Trade and does not include service sectors. The retail trade sectors include the following: building materials, motor vehicles & parts, apparel, food stores, electronics, convenience stores, leisure goods, health stores, furniture, general merchandise, non-store retail, and miscellaneous stores.

Retail Sales per capita

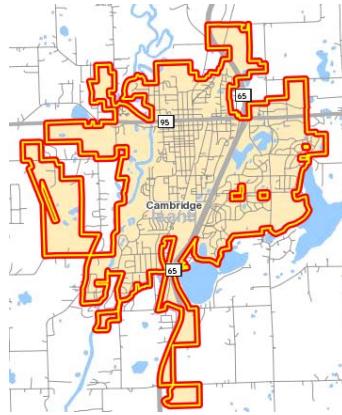


Minnesota Taxable Sales per Capita Trend



Labor Shed and Commute Shed

Cambridge



Labor Shed Report --

Where Workers Live who are Employed in the Selection Area

Total Primary Jobs

	2008	
	Count	Share
Total Primary Jobs	4,752	100.0%

Jobs in Places (Cities, CDPs, etc.) Where Workers Live

	2008	
	Count	Share
Cambridge city, MN	925	19.5%
Isanti city, MN	143	3.0%
North Branch city, MN	119	2.5%
Braham city, MN	102	2.1%
East Bethel city, MN	82	1.7%
Blaine city, MN	73	1.5%
Mora city, MN	70	1.5%
Princeton city, MN	60	1.3%
Rush City city, MN	45	0.9%
Ham Lake city, MN	45	0.9%
All Other Locations	3,088	65.0%

Jobs in Counties Where Workers Live

	2008	
	Count	Share
Isanti County, MN	2,621	55.2%
Chisago County, MN	505	10.6%
Anoka County, MN	416	8.8%
Kanabec County, MN	360	7.6%
Pine County, MN	152	3.2%
Mille Lacs County, MN	138	2.9%

Commute Shed Report --

Where Workers are Employed who Live in the Selection Area

Total Primary Jobs

	2008	
	Count	Share
Total Primary Jobs	3,454	100.0%

Jobs in Places (Cities, CDPs, etc.) Where Workers are Employed

	2008	
	Count	Share
Cambridge city, MN	925	26.8%
Minneapolis city, MN	171	5.0%
Blaine city, MN	131	3.8%
St. Paul city, MN	110	3.2%
Fridley city, MN	97	2.8%
Isanti city, MN	91	2.6%
Coon Rapids city, MN	73	2.1%
Anoka city, MN	69	2.0%
North Branch city, MN	67	1.9%
Bloomington city, MN	66	1.9%
All Other Locations	1,654	47.9%

Jobs in Counties Where Workers are Employed

	2008	
	Count	Share
Isanti County, MN	1,345	38.9%
Anoka County, MN	566	16.4%
Hennepin County, MN	561	16.2%
Ramsey County, MN	281	8.1%
Chisago County, MN	151	4.4%
Washington County, MN	65	1.9%